

4

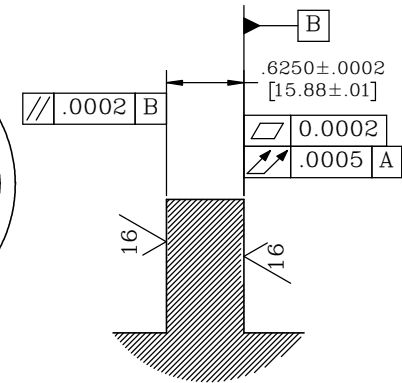
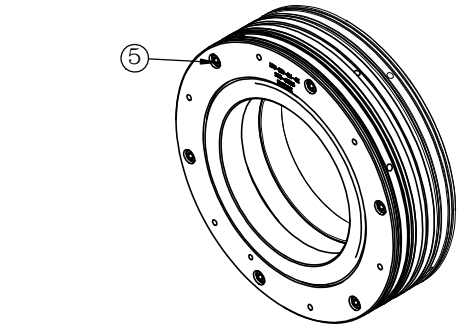
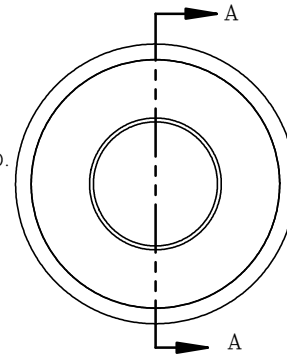
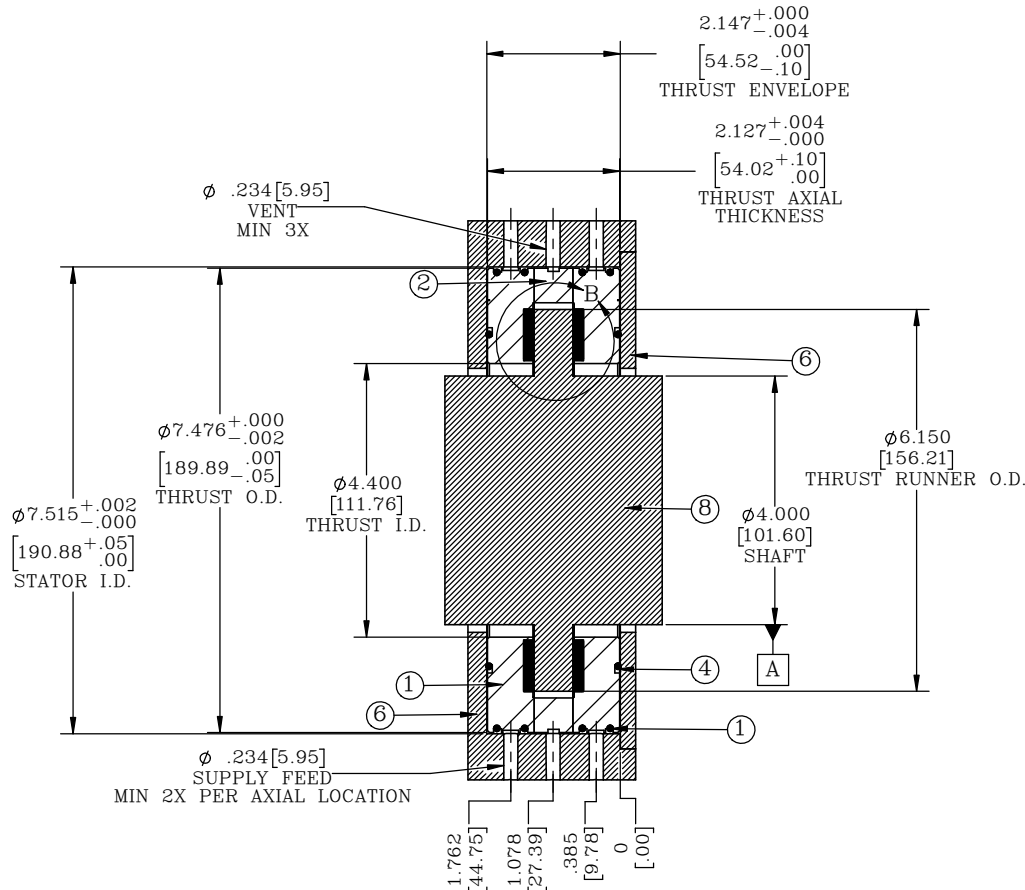
3

2

1

B

B



DETAIL B
SCALE 1 : 1
THRUST COLLAR

SECTION A-A
SCALE 1 : 2

NOTES:

1. MAXIMUM SPEED IS 15,000 RPM.
2. SUPPLY PRESSURE OPERATING RANGE 60-140 PSIG (413.7-965.3 KPA).
3. MAXIMUM CAPACITY AT 140 PSIG AND 15,000 RPM IS 292 LBF (1299 N).
4. TOTAL ESTIMATED FLOW CONSUMPTION OVER SPEED AND LOADING RANGE IS 88-123 SCFH (41.7-58.4 SLM) AT 60 PSIG (413.7 KPA) WITH AIR.
5. MAXIMUM OPERATING TEMPERATURE IS 212°F (100°C).
6. BOTH THRUST BEARINGS MUST BE VENTED TO GAUGE PRESSURE AT I.D. AND O.D.
7. RTD OPTION IS AVAILABLE UPON REQUEST.

PROPRIETARY ITEM:
THIS DRAWING CONTAINS
INFORMATION PROPRIETARY TO NEW
WAY MACHINE COMPONENTS, INC. ANY
REPRODUCTION, DISCLOSURE, OR USE
OF THIS DRAWING OR THE
INFORMATION CONTAINED HEREIN
IS EXPRESSLY PROHIBITED EXCEPT AS
NEW WAY MAY OTHERWISE AGREE TO
IN WRITING. ALL RIGHTS RESERVED BY
NEW WAY MACHINE COMPONENTS, INC.

CUSTOMER PRINT

| 8 | CUSTOMER | 4" SHAFT/THRUST COLLAR | CUSTOMER SPECIFIED | 1 |
|----------|-------------|----------------------------|---------------------|-----|
| 7 | CUSTOMER | RETAINER PLATE | CUSTOMER SPECIFIED | 1 |
| 6 | CUSTOMER | STATOR | CUSTOMER SPECIFIED | 1 |
| 5 | 90-0627 | 10-24 X 1.75" SHCS | 316 STAINLESS STEEL | 6 |
| 4 | 90-0621 | O-RING - 160 | VITON 75A | 2 |
| 3 | 90-0307 | O-RING - 168 | VITON 75A | 4 |
| 2 | 80-00672 | 4" THRUST SPACER | 316 STAINLESS STEEL | 1 |
| 1 | 160-0004 | STANDARD 4" THRUST BEARING | 316 SST / GRAPHITE | 2 |
| ITEM NO. | PART NUMBER | DESCRIPTION | MATERIAL | QTY |

| | | | | | | | |
|--|--------------|--|---------------------------|-------------------|---------------------|-------------------------------------|--|
| TOLERANCES UNLESS OTHERWISE SPECIFIED | | TITLE: STANDARD 4" DOUBLE OPPOSED THRUST BEARING | | MATERIAL: SEE BOM | | NEWWAY [®] air bearings | |
| ANGLES: 1/2" | DRAWN: MZ | DATE: 07/27/23 | HEAT TREAT: - | | DWG. TYPE: CUSTOMER | | |
| DECIMALS: XX ± .01 | CHECKED: PJM | DATE: 7/28/23 | FINISH: - | | DWG. #: | NW-TB-04-01-C | |
| FRACTIONS: 1/64 | SCALE: 1:4 | SHT: 1 OF 1 | USED ON (NW #): TOP LEVEL | | REV: | - | |
| SURFACE ROUGHNESS: 63 RMS MAX. BREAK ALL SHARP EDGES: 005-000 | | | | | | | |

4

3

2

1

A

A