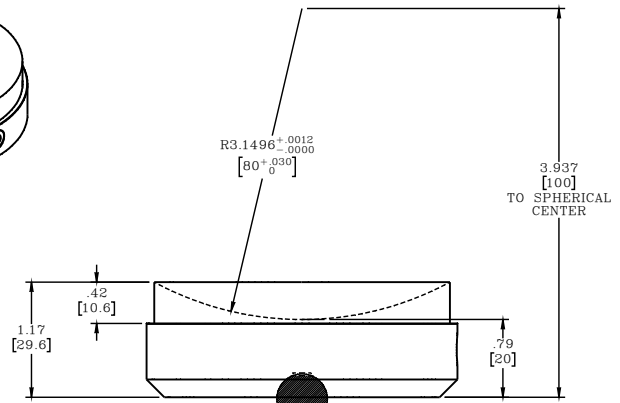
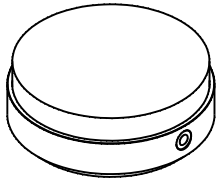


4

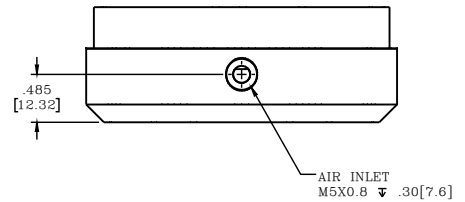
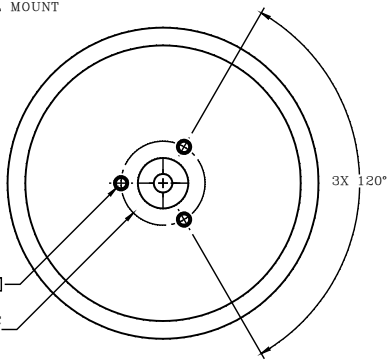
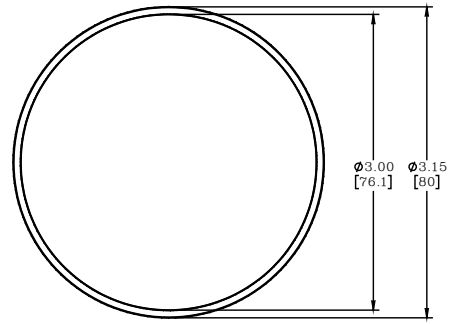
3

2

1



Ø.512
[13]
SPHERICAL POCKET FOR
13MM BALL MOUNT



PROPRIETARY ITEM
 THE FOLLOWING CONDITIONS APPLY TO THIS DRAWING:
 1. THIS DRAWING IS THE PROPERTY OF NEWWAY MACHINE CORPORATION. IT IS TO BE USED ONLY FOR THE SPECIFIC PART AND QUANTITY ORDERED.
 2. THIS DRAWING IS NOT TO BE REPRODUCED OR COPIED IN ANY MANNER WITHOUT THE WRITTEN PERMISSION OF NEWWAY MACHINE CORPORATION.
 3. NEWWAY MACHINE CORPORATION ASSUMES NO LIABILITY FOR ANY DAMAGE TO PROPERTY OR PERSONS ARISING FROM THE USE OF THIS DRAWING.
 4. NEWWAY MACHINE CORPORATION ASSUMES NO LIABILITY FOR ANY DAMAGE TO PROPERTY OR PERSONS ARISING FROM THE USE OF THIS DRAWING.
 5. NEWWAY MACHINE CORPORATION ASSUMES NO LIABILITY FOR ANY DAMAGE TO PROPERTY OR PERSONS ARISING FROM THE USE OF THIS DRAWING.

CUSTOMER PRINT

TOLERANCES UNLESS SPECIFIED OTHERWISE: ANGLES ± 1/4° DECIMALS XX ± .01 FRACTIONS X/64 SHEETS FINISHED: <input checked="" type="checkbox"/> SEE MAX. BREAK ALL SHARP EDGES 905-535		TITLE: SPHERICAL BEARING, 80MM BASE W/ 80MM CONCAVE RADIUS DRAWN: SS CHECKED: DATE: 01/26/21 SCALE: 1:1 USED ON (DW #): SHEETS: 1 OF 1		MATERIAL: ALUMINUM/GRAPHITE HEAT TREAT: - FINISH: BLUE ANODIZE		NEUWAY air bearings		DWG. #	REV.
						S3680R80		-	

4

3

2

1