

4

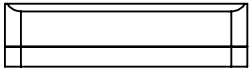
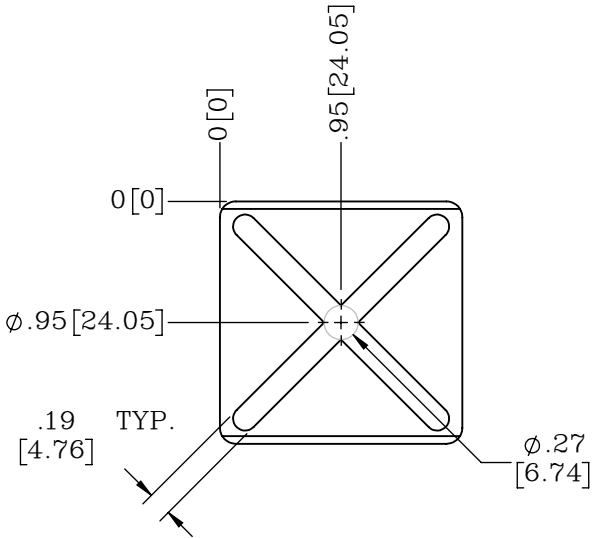
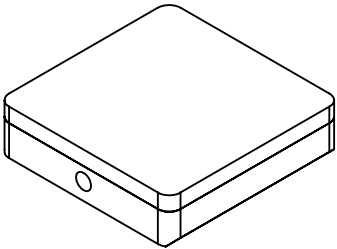
3

2

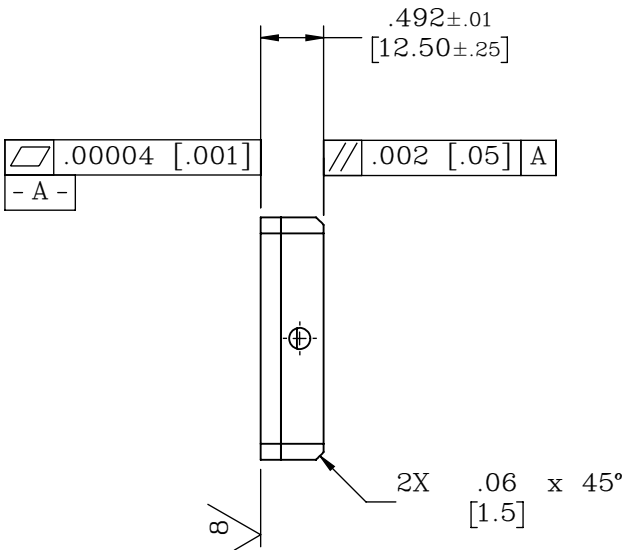
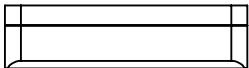
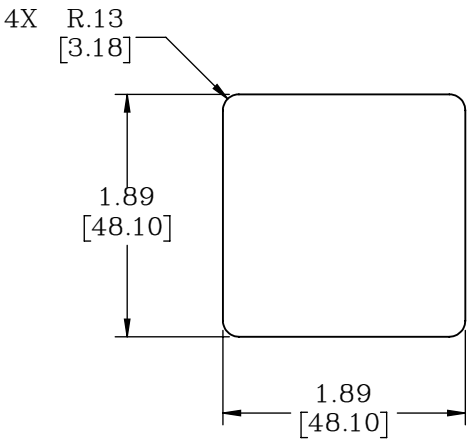
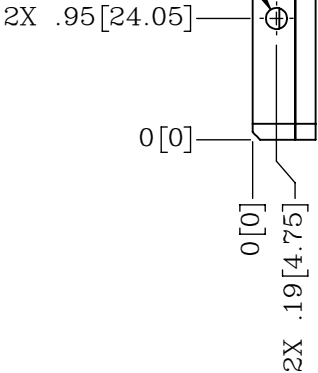
1

B

B



2X M5X0.8 - 6H  $\nabla$  .30 [7.6]  
MIRRORED ON OPPOSITE FACE



NOTES:

- EACH PART WILL BE SHIPPED WITH SET SCREW PLUGS.  
SEAL PLUG THREADS USING LOCTITE 401 OR A COMPARABLE C.A. GLUE.  
OTHER SEALING METHODS MAY PUT UNDO STRESS ON THE PART AND  
AFFECT BEARING PERFORMANCE

PROPRIETARY ITEM:  
THIS DRAWING CONTAINS  
INFORMATION PROPRIETARY TO NEW  
WAY MACHINE COMPONENTS, INC. ANY  
REPRODUCTION, DISCLOSURE, OR USE  
OF THIS DRAWING OR THE  
INFORMATION CONTAINED HEREIN  
IS EXPRESSLY PROHIBITED EXCEPT AS  
NEW WAY MAY OTHERWISE AGREE TO  
IN WRITING. ALL RIGHTS RESERVED BY  
NEW WAY MACHINE COMPONENTS, INC.

CUSTOMER PRINT

TOLERANCES UNLESS OTHERWISE SPECIFIED ANGLES: $\pm 1/2^\circ$ DECIMALS: XX $\pm .01$ XXX $\pm .005$ FRACTIONS: $\pm 1/64$ SURFACE ROUGHNESS: 63/ RMS MAX. BREAK ALL SHARP EDGES: .005 - .020	TITLE: 48.1mm X 48.1mm STANDARD BONDED BEARING			<b>NEWWAY<sup>®</sup></b> air bearings	
	DRAWN:	MC	DATE: 10/22/08		
	CHECKED:		DATE:	MATERIAL: ALUMINUM / GRAPHITE	HEAT TREAT: -
	SCALE:	2:3	SHT. 1 OF 1	FINISH: BLACK ANODIZE	DWG. TYPE: -
	USED ON (NW #):	-		DWG. #: S17048112.5	REV. B

4

3

2

1

A

A