

4

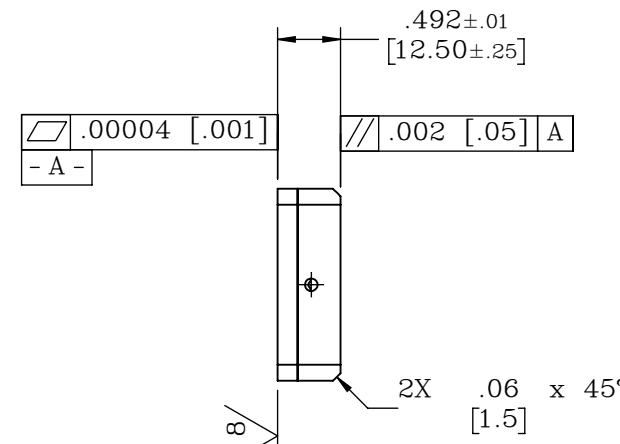
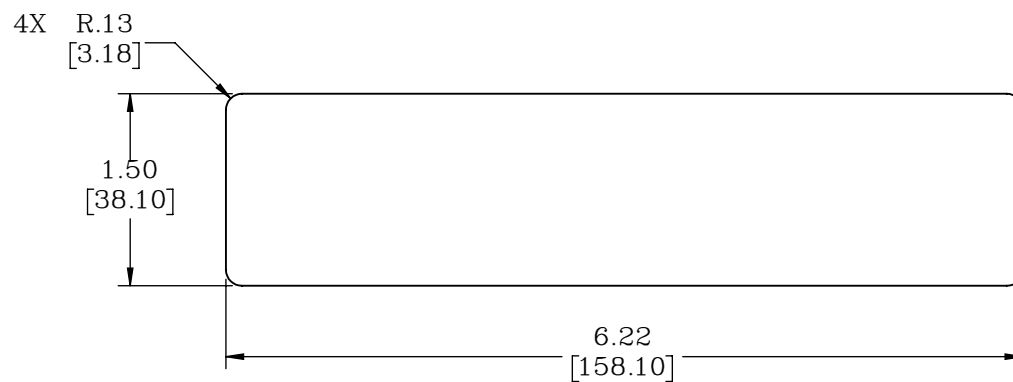
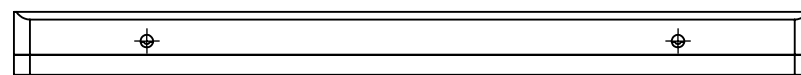
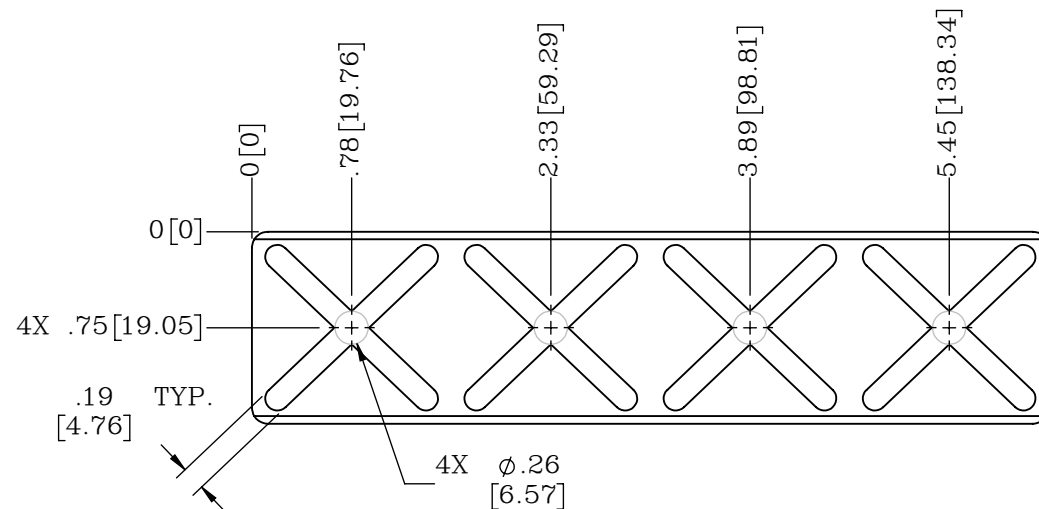
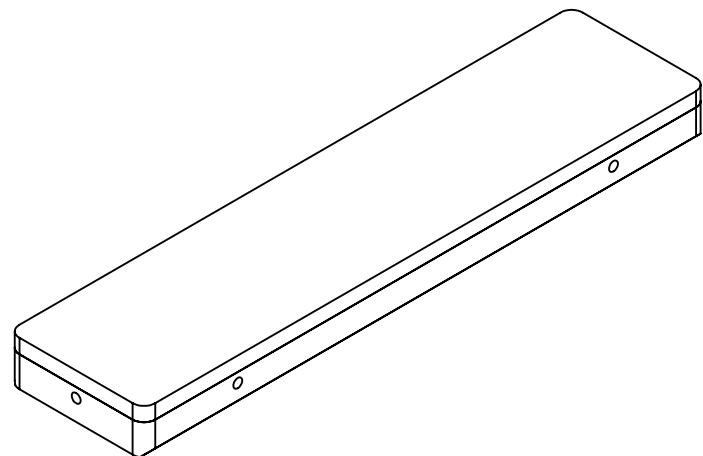
3

2

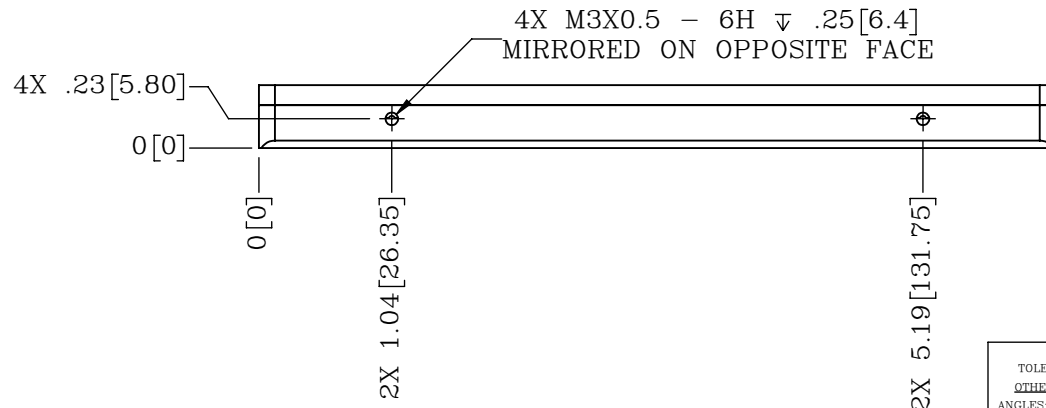
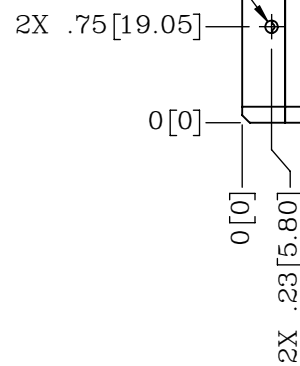
1

B

B



2X M3X0.5 - 6H ∇ .25 [6.4]
MIRRORED ON OPPOSITE FACE



NOTES:

- EACH PART WILL BE SHIPPED WITH SET SCREW PLUGS. SEAL PLUG THREADS USING LOCTITE 401 OR A COMPARABLE C.A. GLUE. OTHER SEALING METHODS MAY PUT UNDO STRESS ON THE PART AND AFFECT BEARING PERFORMANCE

PROPRIETARY ITEM:
THIS DRAWING CONTAINS INFORMATION PROPRIETARY TO NEW WAY MACHINE COMPONENTS, INC. ANY REPRODUCTION, DISCLOSURE, OR USE OF THIS DRAWING OR THE INFORMATION CONTAINED HEREIN IS EXPRESSLY PROHIBITED EXCEPT AS IN WRITING. ALL RIGHTS RESERVED BY NEW WAY MACHINE COMPONENTS, INC.

CUSTOMER PRINT

TOLERANCES UNLESS OTHERWISE SPECIFIED		TITLE: 38.1mm X 198.1mm STANDARD BONDED BEARING		NEWWAY air bearings	
ANGLES: $\pm 1/2^\circ$		DRAWN: EJS	DATE: 05/17/17		
DECIMALS: XX \pm .01		CHECKED:	DATE:	HEAT TREAT: -	
FRACTIONS: $\pm 1/64$		SCALE: 2:3	SHT. 1 OF 1	DWG. TYPE: -	
SURFACE ROUGHNESS: \sqrt{Ra} RMS MAX.		USED ON (NW #): -		FINISH: BLACK ANODIZE	
BREAK ALL SHARP EDGES: .005-.020				DWG. # S17038412.5	
				REV. C	

4

3

2

1

A

A