

4

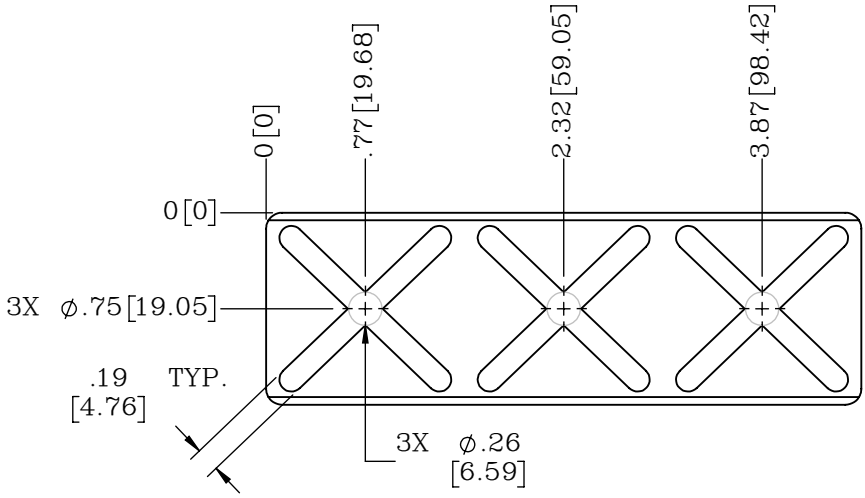
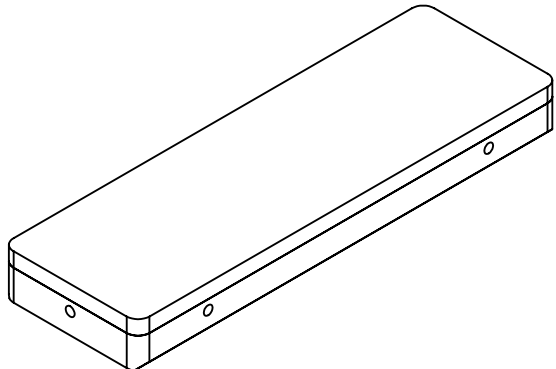
3

2

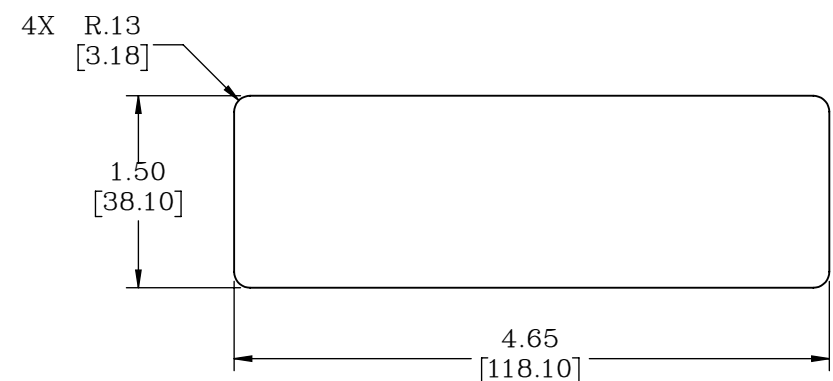
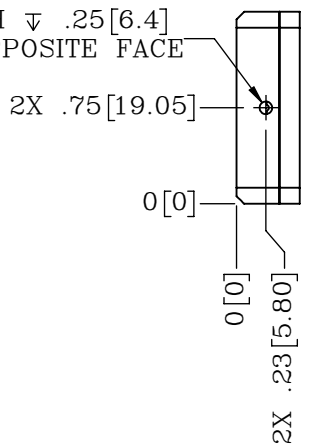
1

B

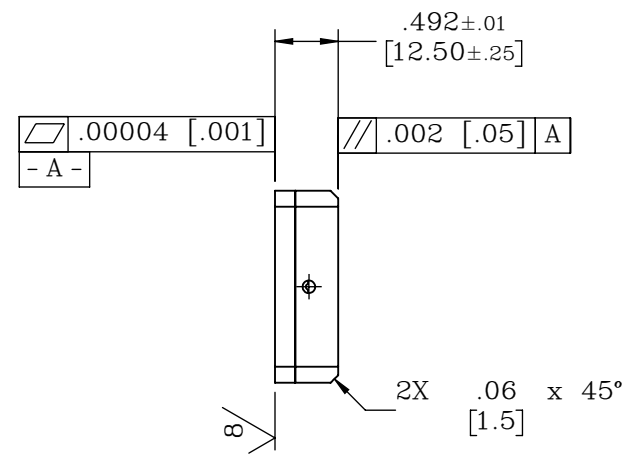
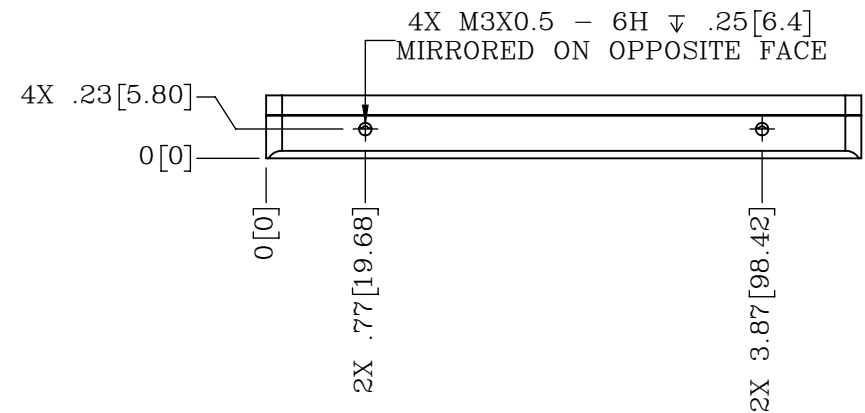
B



2X M3X0.5 - 6H  $\nabla$  .25 [6.4]  
MIRRORED ON OPPOSITE FACE



4X M3X0.5 - 6H  $\nabla$  .25 [6.4]  
MIRRORED ON OPPOSITE FACE



NOTES:

- EACH PART WILL BE SHIPPED WITH SET SCREW PLUGS. SEAL PLUG THREADS USING LOCTITE 401 OR A COMPARABLE C.A. GLUE. OTHER SEALING METHODS MAY PUT UNDO STRESS ON THE PART AND AFFECT BEARING PERFORMANCE

PROPRIETARY ITEM:  
THIS DRAWING CONTAINS INFORMATION PROPRIETARY TO NEW WAY MACHINE COMPONENTS, INC. ANY REPRODUCTION, DISCLOSURE, OR USE OF THIS DRAWING OR THE INFORMATION CONTAINED HEREIN IS EXPRESSLY PROHIBITED EXCEPT AS NEW WAY MAY OTHERWISE AGREE TO IN WRITING. ALL RIGHTS RESERVED BY NEW WAY MACHINE COMPONENTS, INC.

CUSTOMER PRINT

TOLERANCES UNLESS OTHERWISE SPECIFIED ANGLES: $\pm 1/2^\circ$ DECIMALS: XX $\pm .01$ XXX $\pm .005$ FRACTIONS: $\pm 1/64$ SURFACE ROUGHNESS: $\sqrt{Ra}$ RMS MAX. BREAK ALL SHARP EDGES: .005-.020	TITLE: 38.1mm X 118.1mm STANDARD BONDED BEARING			
	DRAWN: MC	DATE: 06/11/13		
	CHECKED:	DATE:	HEAT TREAT: -	
	SCALE: 2:3	SHT. 1 OF 1	FINISH: BLACK ANODIZE	
USED ON (NW #): -	DWG. # S17038312.5		REV. D	

4

3

2

1

A

A