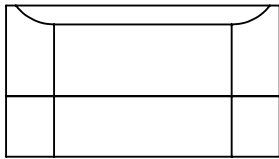
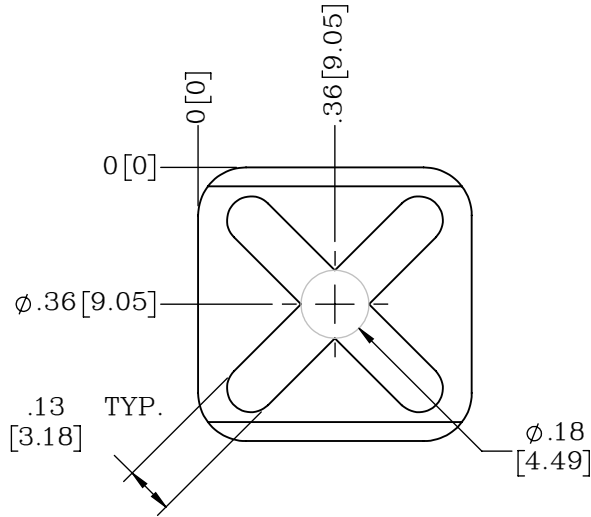
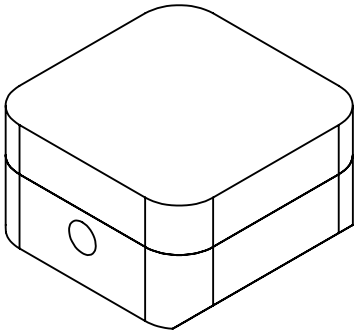
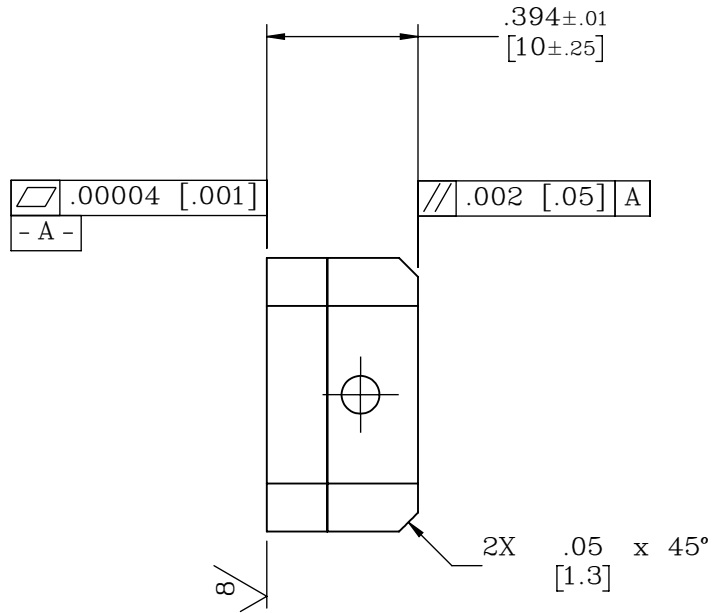
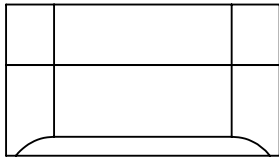
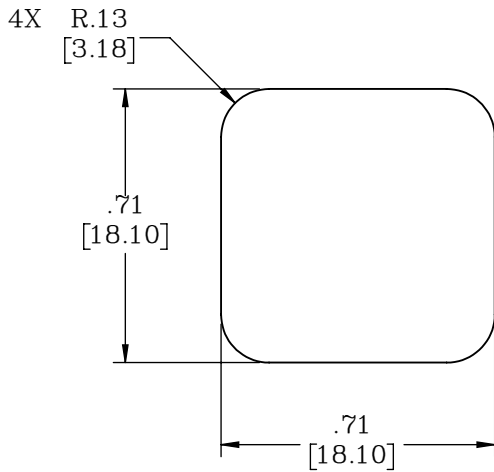
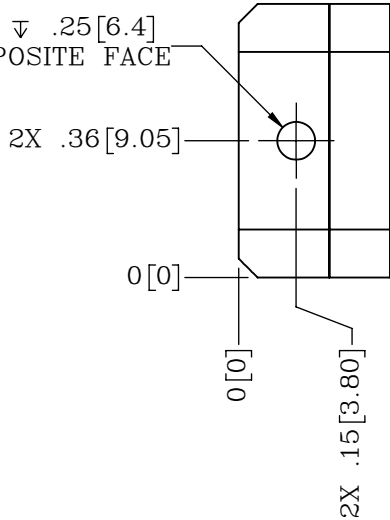


B

B



2X M3X0.5 - 6H ∇ .25 [6.4]
MIRRORED ON OPPOSITE FACE



- NOTES:
- EACH PART WILL BE SHIPPED WITH SET SCREW PLUGS.
SEAL PLUG THREADS USING LOCTITE 401 OR A COMPARABLE C.A. GLUE.
OTHER SEALING METHODS MAY PUT UNDO STRESS ON THE PART AND
AFFECT BEARING PERFORMANCE

PROPRIETARY ITEM:
THIS DRAWING CONTAINS
INFORMATION PROPRIETARY TO NEW
WAY MACHINE COMPONENTS, INC. ANY
REPRODUCTION, DISCLOSURE, OR USE
OF THIS DRAWING OR THE
INFORMATION CONTAINED HEREIN
IS EXPRESSLY PROHIBITED EXCEPT AS
NEW WAY MAY OTHERWISE AGREE TO
IN WRITING. ALL RIGHTS RESERVED BY
NEW WAY MACHINE COMPONENTS, INC.

CUSTOMER PRINT

TOLERANCES UNLESS OTHERWISE SPECIFIED ANGLES: $\pm 1/2^\circ$ DECIMALS: XX $\pm .01$ XXX $\pm .005$ FRACTIONS: $\pm 1/64$ SURFACE ROUGHNESS: 63 RMS MAX. BREAK ALL SHARP EDGES: .005-.020	TITLE: 18.1mm X 18.1mm STANDARD BONDED BEARING		NEWWAY [®] air bearings	
	DRAWN: DHP	DATE: 01/24/24		
	CHECKED:	DATE:	MATERIAL: ALUMINUM / GRAPHITE	
	SCALE: 2:1	SHT. 1 OF 1	HEAT TREAT: -	
	USED ON (NW #): -	FINISH: BLACK ANODIZE		
			DWG. TYPE	-
			DWG. #	S17018110
			REV.	-

A

A