

4

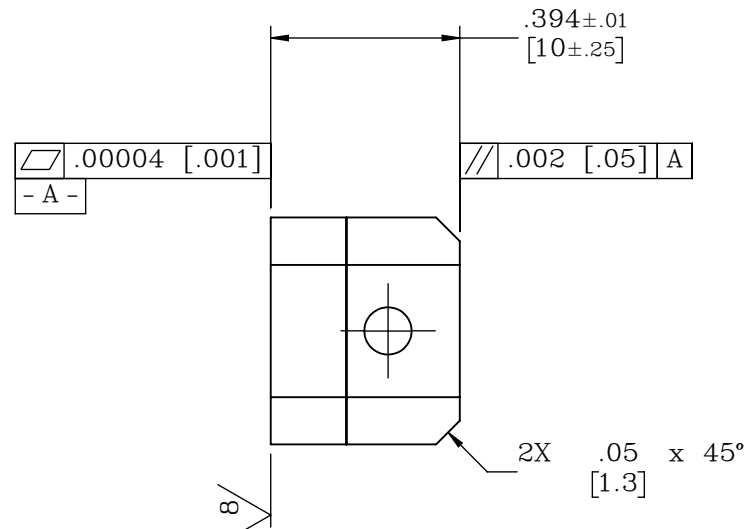
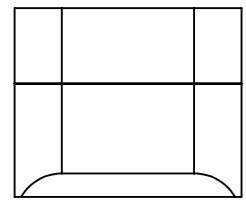
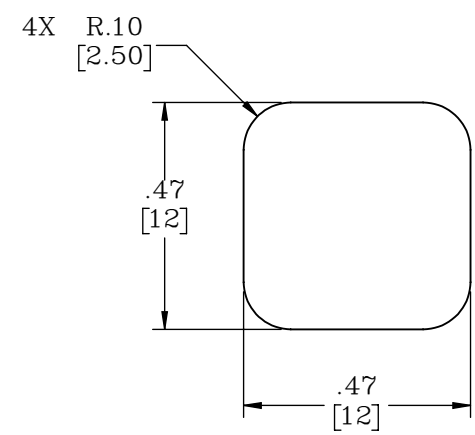
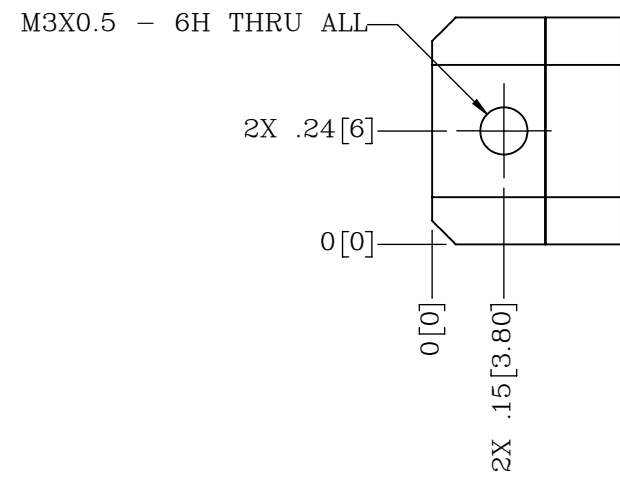
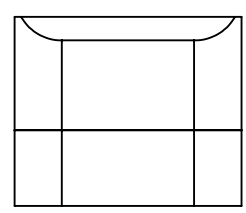
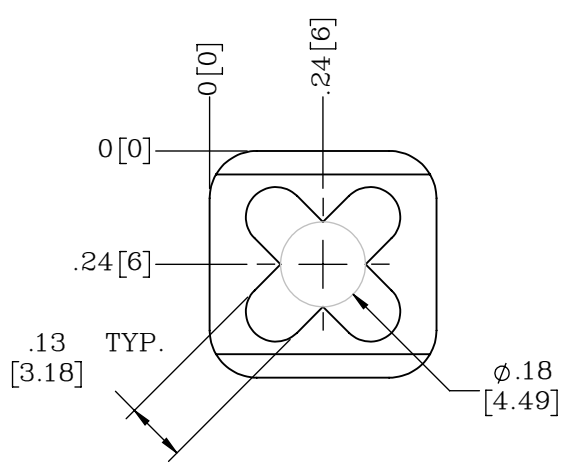
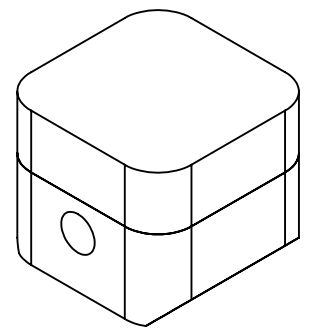
3

2

1

B

B



NOTES:
 1. EACH PART WILL BE SHIPPED WITH SET SCREW PLUGS.
 SEAL PLUG THREADS USING LOCTITE 401 OR A COMPARABLE C.A. GLUE.
 OTHER SEALING METHODS MAY PUT UNDO STRESS ON THE PART AND
 AFFECT BEARING PERFORMANCE

PROPRIETARY ITEM:
 THIS DRAWING CONTAINS
 INFORMATION PROPRIETARY TO NEW
 WAY MACHINE COMPONENTS, INC. ANY
 REPRODUCTION, DISCLOSURE, OR USE
 OF THIS DRAWING OR THE
 INFORMATION CONTAINED HEREIN
 IS EXPRESSLY PROHIBITED EXCEPT AS
 NEW WAY MAY OTHERWISE AGREE TO
 IN WRITING. ALL RIGHTS RESERVED BY
 NEW WAY MACHINE COMPONENTS, INC.

CUSTOMER PRINT

| | | | | | |
|---------------------------------------|--|--|----------------|-------------------------------|-------------------|
| TOLERANCES UNLESS OTHERWISE SPECIFIED | | TITLE: 12.0mm X 12.0mm STANDARD BONDED BEARING | | NEWWAY air bearings | |
| ANGLES: ± 1/2° | DECIMALS: XX ± .01 | DRAWN: EJS | DATE: 04/17/20 | | |
| FRACTIONS: ± 1/64 | SURFACE ROUGHNESS: √ RMS MAX. BREAK ALL SHARP EDGES: .005-.020 | CHECKED: | DATE: | HEAT TREAT: - | DWG. TYPE: - |
| | | SCALE: 5:2 | SHT. 1 OF 1 | FINISH: BLACK ANODIZE | DWG. #: S17012110 |
| | | USED ON (NW #): - | | REV. B | |

4

3

2

1

A

A