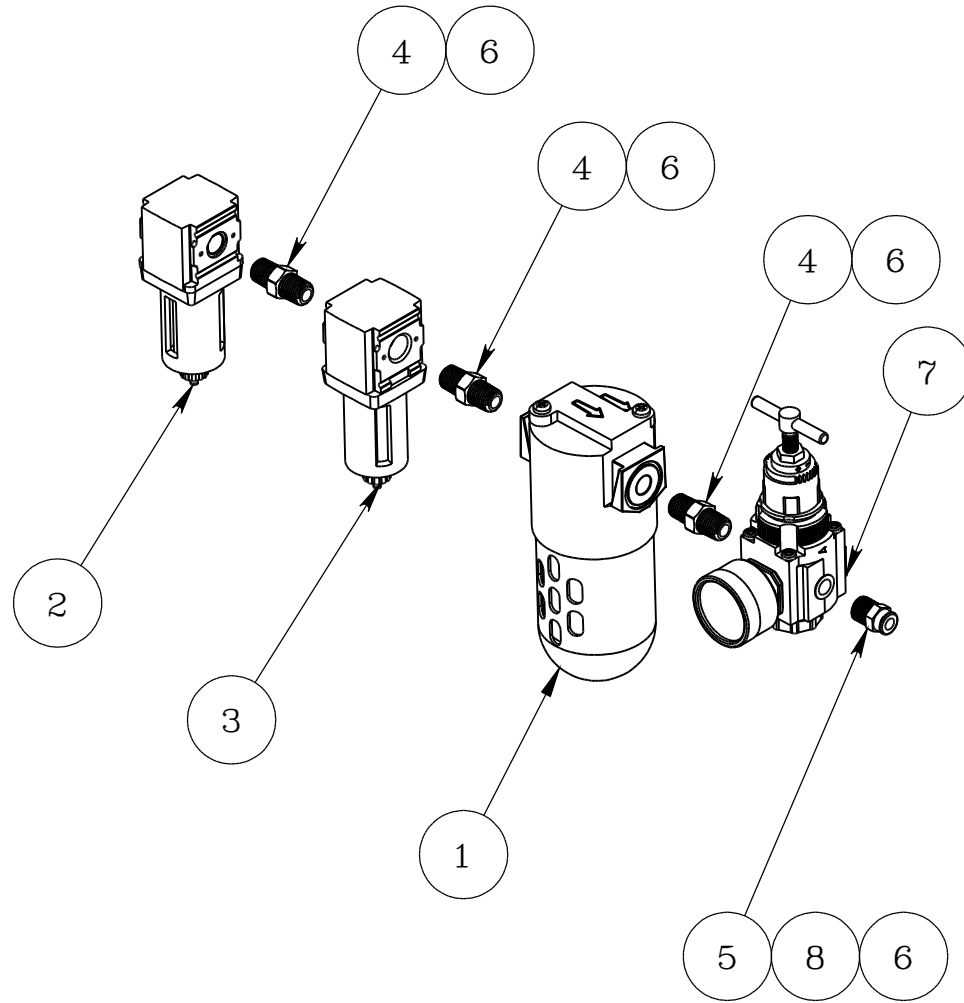




REVISIONS				
ECN#	REV.	DESCRIPTION	DATE	APPROVED
002697	A	ADDED ITEM 7, P/N: 90-0103 TO BOM AND EXP DWG VIEW.	3/10/2016	ECL
002945	B	REMOVED P/N: S90L006, ADDED ITEM 2, P/N: 90-0126, ADDED ITEM 3, P/N: 90-0127.	7/19/2016	ECL



ITEM NO.	PART NUMBER	DESCRIPTION	QTY.
1	S90L007	AIR DRYER	1
(B) 2	90-0126	PARTICULATE FILTER, 50 SCFM, 150 PSI, 1/4 NPT, 5 MICRON	1
(B) 3	90-0127	COALESCING FILTER, 11.0 SCFM, 150 PSI, 1/4 NPT, 0.01 MICRON	1
4	S90F091	1/4 SS HEX NIPPLE	3
5	S90F092	1/4 X 1/4 STRAIGHT ADAPTER	1
6	90-0103	PIPE THREAD SEALANT TAPE	1
7	S90R002	REGULATOR W/ PRESSURE GAUGE	1
8	S90F093	5/32 X 1/4 STRAIGHT ADAPTER	1

PROPRIETARY ITEM:

THIS DRAWING CONTAINS INFORMATION PROPRIETARY TO NEW WAY MACHINE COMPONENTS, INC. ANY REPRODUCTION, DISCLOSURE, OR USE OF THIS DRAWING OR THE INFORMATION CONTAINED HEREIN IS EXPRESSLY PROHIBITED EXCEPT AS NEW WAY MAY OTHERWISE AGREE TO IN WRITING. ALL RIGHTS RESERVED BY NEW WAY MACHINE COMPONENTS, INC.

TOLERANCES UNLESS OTHERWISE SPECIFIED		TITLE: COMPRESSED AIR FILTER AND DRYER		NEWWAY air bearings	
ANGLES \pm 1/2°		DRAWN: ECL	DATE: 6/24/2016		
DECIMALS .XX .010		CHECKED:	DATE:	HEAT TREAT:	
DECIMALS .XXX .005		SCALE: 1:4	SHT: 1 OF 1	EWO. NO.:	
FRACTIONS 1/64		USED ON:	FINISH: SEE NOTES	DWG. NO. 99-0284	
SURFACE ROUGHNESS 63 $\sqrt{\text{RMS MAX.}}$				REV. B	
BREAK ALL SHARP EDGES .005-.020					

