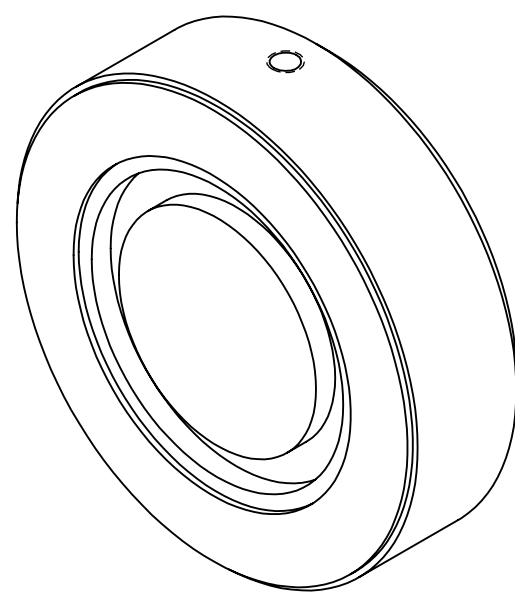
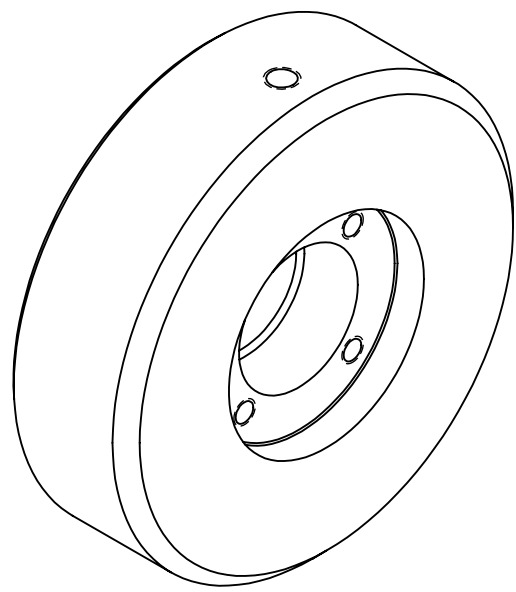


4

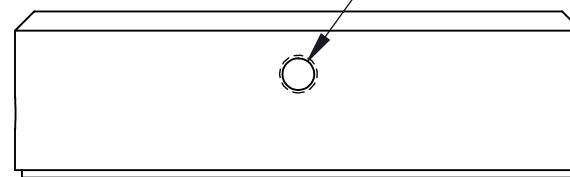
3

2

1



$\phi .17 [4.20] \nabla .68 [17.27]$
M5 - 6H $\nabla .16 [3.96]$
VACUUM PORT



$.87 \pm .01$

$[22.00 \pm .38]$

$.00004 [.001]$

$\phi 2.95$

$[74.93]$

$\phi 2.04$

$[51.90]$

A

A

$\phi 2.04$

$[51.90]$

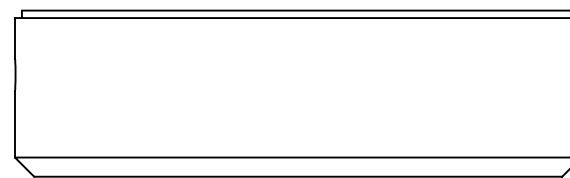
$\phi .17 [4.20] \nabla .29 [7.48]$

M5 - 6H $\nabla .20 [5.08]$

PRESSURE PORT

$.10 \times 45^\circ$

$[2.54]$



4X $\phi .13 [3.30] \nabla .38 [9.72]$

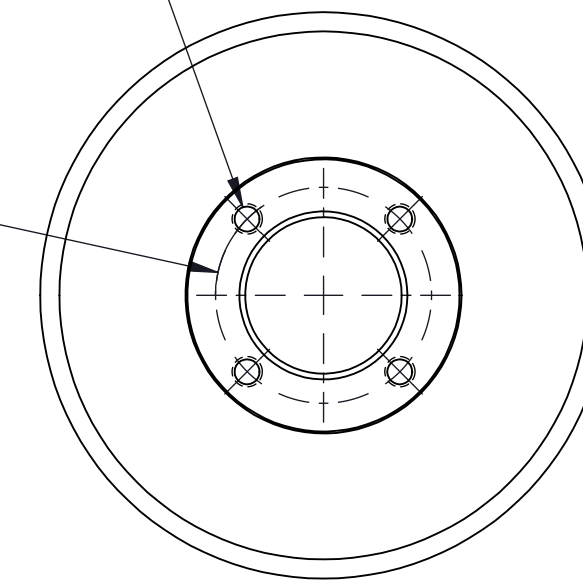
M4 - 6H $\nabla .30 [7.62]$

EQ. SP. ON B.C.

$\phi 1.13$

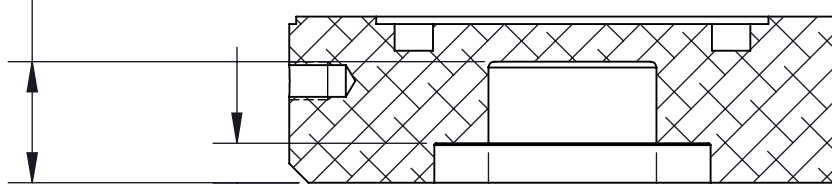
$[28.58]$

B.C.



$.63$

$[16.00]$



$.21$

$[5.23]$

$\phi .88$

$[22.23]$

$\phi 1.44$

$[36.53]$

SECTION A-A

SCALE 1 : 1

NOTES:

1. ALL DIMENSIONS ARE REFERENCE UNLESS OTHERWISE SPECIFIED

PROPRIETARY ITEM:
THIS DRAWING CONTAINS
INFORMATION PROPRIETARY TO NEW
WAY MACHINE COMPONENTS, INC. ANY
REPRODUCTION, DISCLOSURE, OR USE
OF THIS DRAWING OR THE
INFORMATION CONTAINED HEREIN
WITHOUT THE WRITTEN AGREEMENT OF
NEW WAY MACHINE COMPONENTS, INC.
IS EXPRESSLY PROHIBITED. ALL RIGHTS
RESERVED BY NEW WAY MACHINE
COMPONENTS, INC.

TOLERANCES UNLESS OTHERWISE SPECIFIED		TITLE: Ø75 MM VPL BEARING		DRAWN: GWS		DATE: 2/8/05		MATERIAL: N/A		HEAT TREAT: N/A		DWG. TYPE: N/A		REV.:	
ANGLES: $\pm 1/2^\circ$		SCALE: 2:1		SHEET: 1 OF 1		FINISH: N/A		DWG. #:		S207501		-05			
DECIMALS: XX ± .01		USED ON (NW #): N/A													
FRACTIONS: $\pm 1/64$															
SURFACE ROUGHNESS: $\sqrt{32}$ RMS MAX.															
BREAK ALL SHARP EDGES: .005 - .020															

4

3

2

1