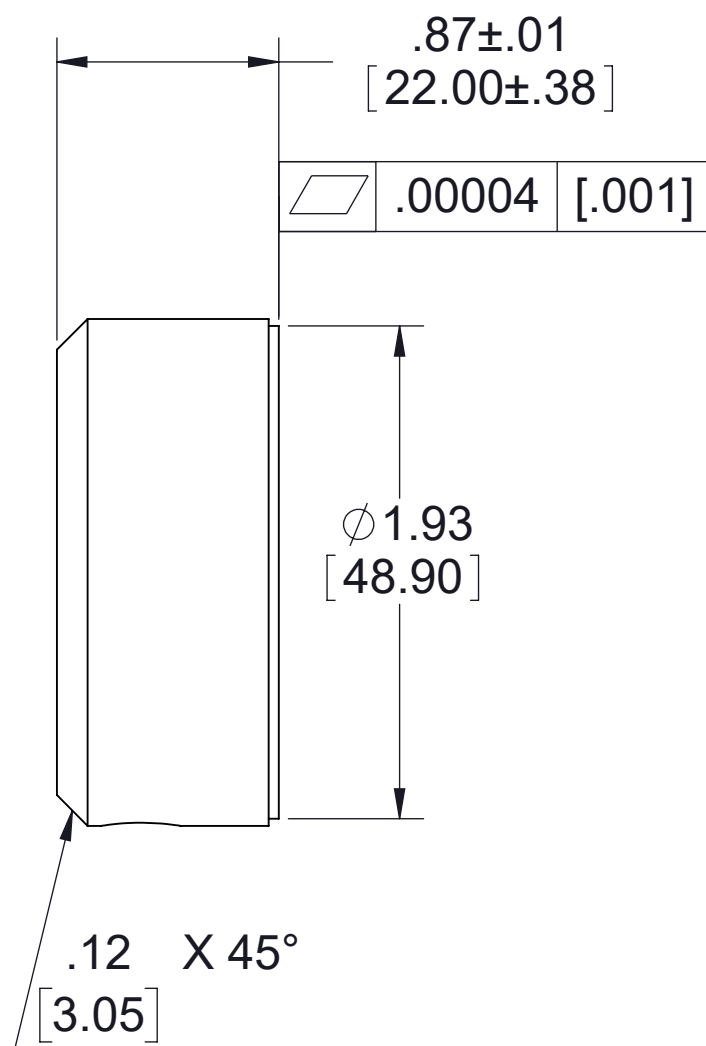
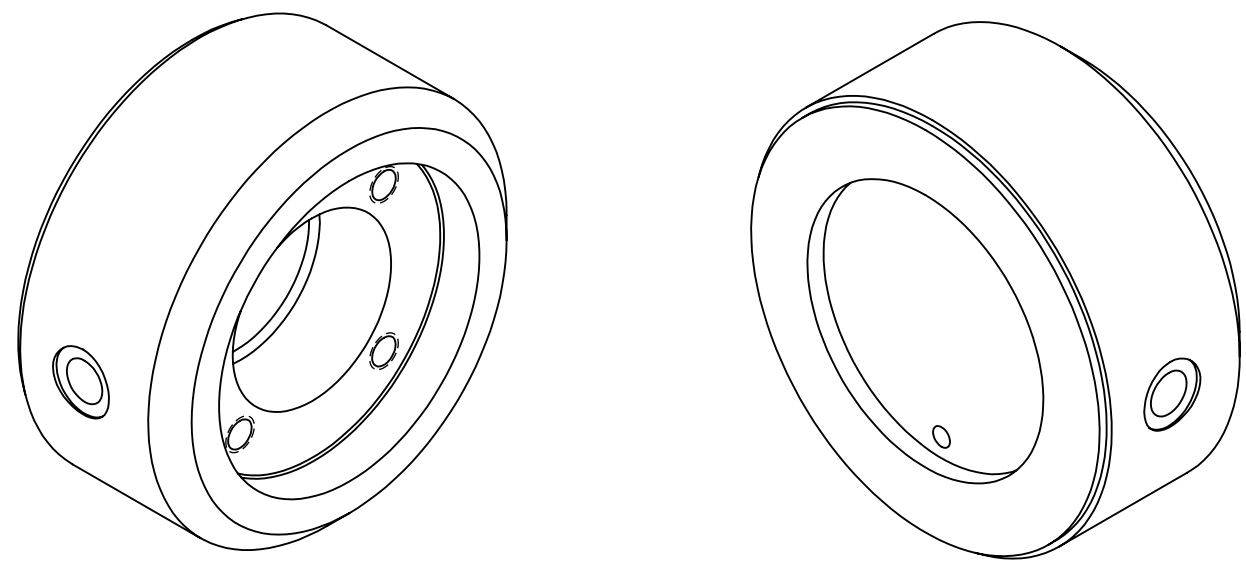


4

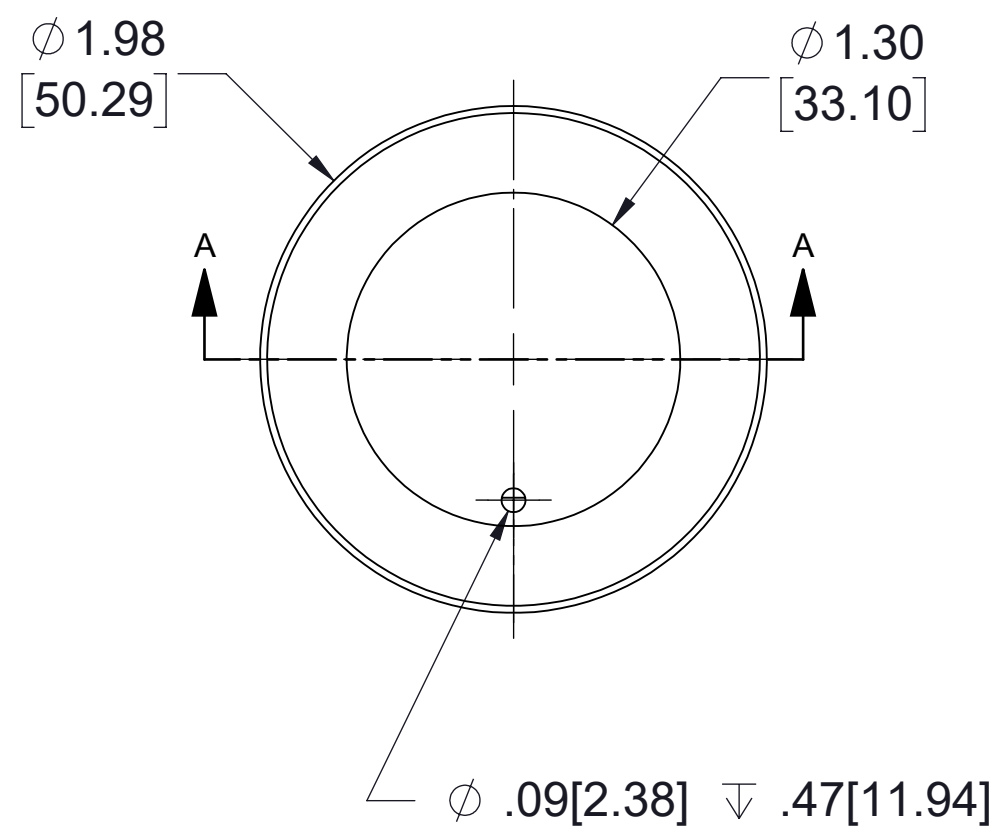
3

2

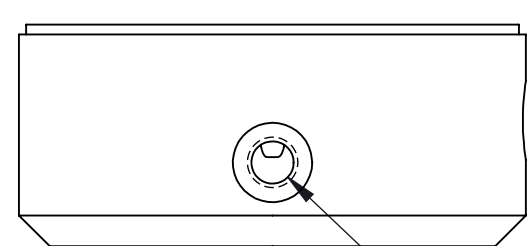
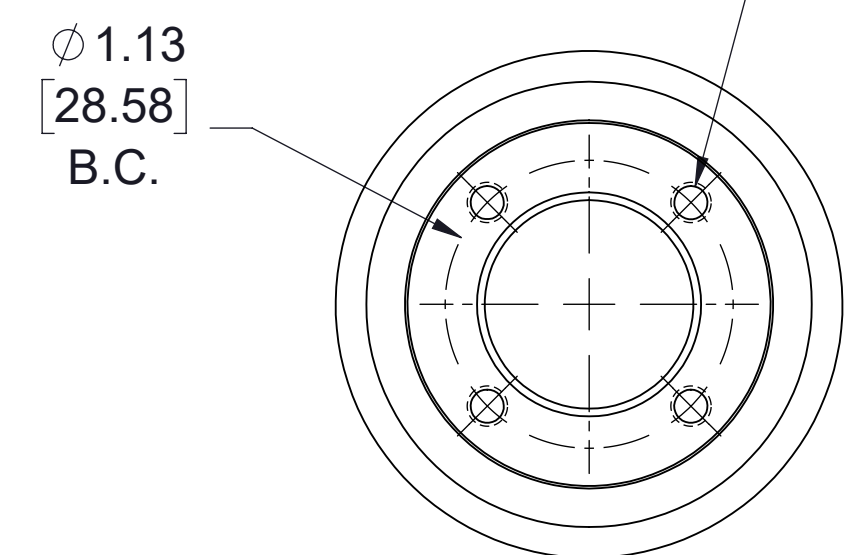
1



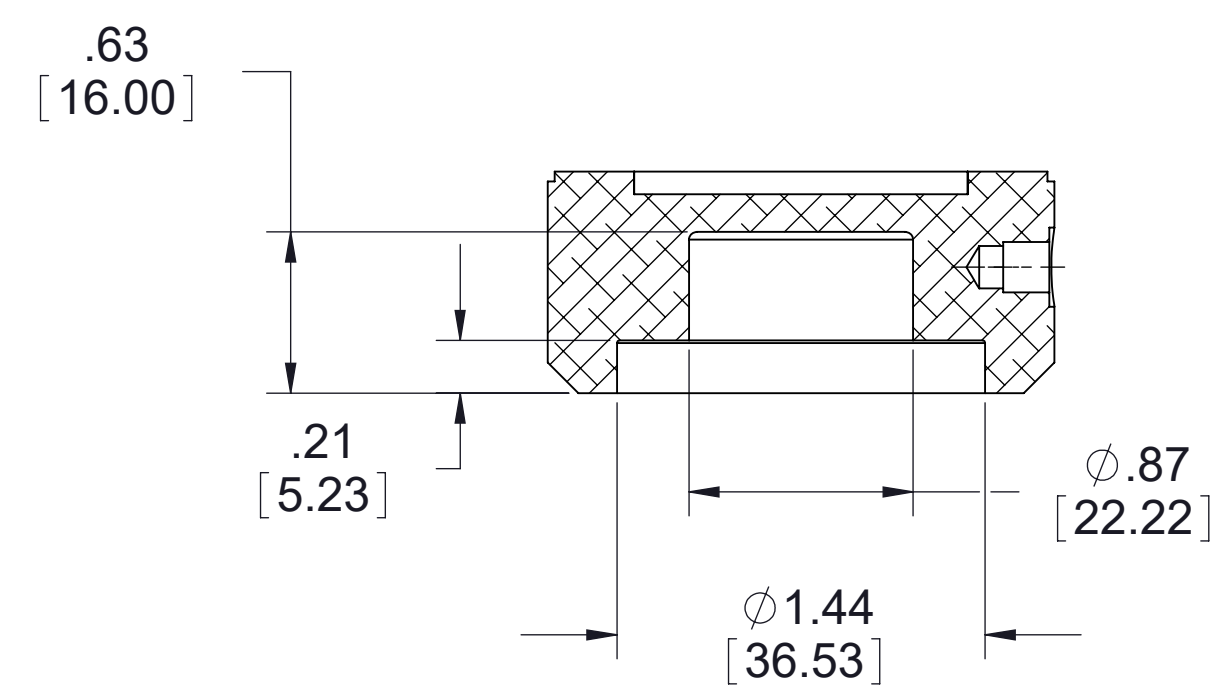
M5X0.8-6H ∇ 5.08
 \square ϕ 7.87 ∇ .50
 PRESSURE PORT



4X M4X0.7 - 6H ∇ .30 [7.62]
 EQ. SP. ON B.C.



M5X0.8 - 6H ∇ .38 [9.53]
 \square ϕ 7.87 ∇ .50
 VACUUM PORT



SECTION A-A

NOTES:

1. ALL DIMENSIONS ARE REFERENCE UNLESS OTHERWISE SPECIFIED

PROPRIETARY ITEM:
 THIS DRAWING CONTAINS
 INFORMATION PROPRIETARY TO NEW
 WAY MACHINE COMPONENTS, INC. ANY
 REPRODUCTION, DISCLOSURE, OR USE
 OF THIS DRAWING OR THE
 INFORMATION CONTAINED HEREIN
 IS EXPRESSLY PROHIBITED BY LEGAL
 AGREEMENT. NEW WAY MACHINE COMPONENTS, INC.
 IN WRITING. ALL RIGHTS RESERVED BY
 NEW WAY MACHINE COMPONENTS, INC.

TOLERANCES UNLESS OTHERWISE SPECIFIED		TITLE: Ø50 MM VPL BEARING		DRAWN: MC		DATE: 3/29/10		MATERIAL: N/A		HEAT TREAT: N/A		DWG. TYPE: N/A	
ANGLES: 1/2°		SCALE: 2:1.5		SHEET: 1 OF 1		FINISH: N/A		DWG. #		REV.		S205001 B	
DECIMALS: XX ± .01		USED ON (NW #): N/A		BREAK ALL SHARP EDGES: .005 - .020		FINISH: N/A		DWG. #		REV.		S205001 B	
FRACTIONS: 1/64													
SURFACE ROUGHNESS: 32 RMS MAX.													

4

3

2

1