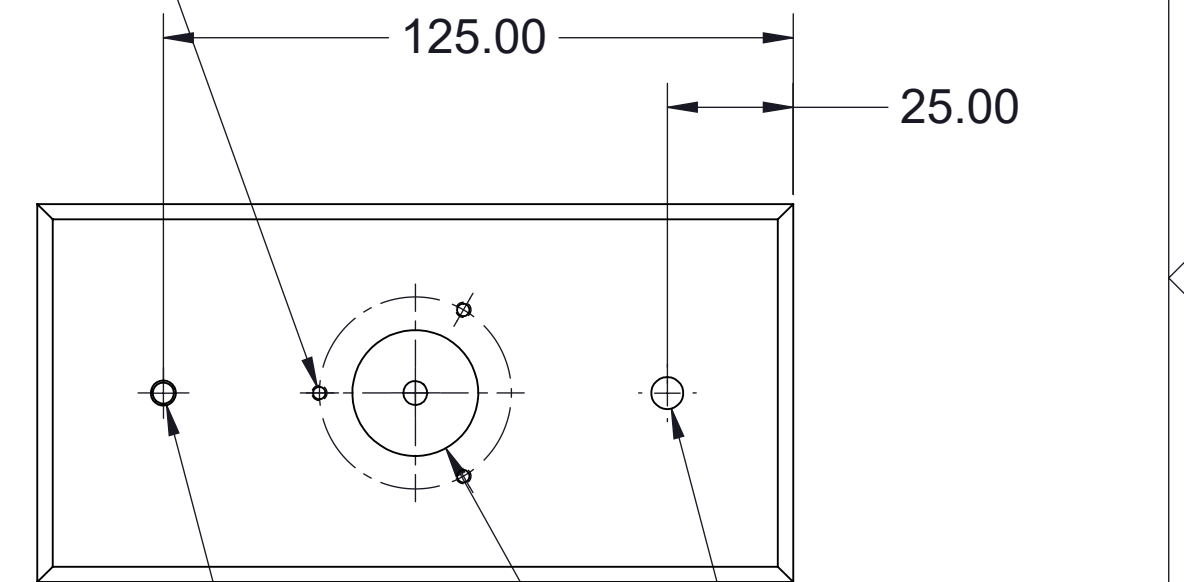
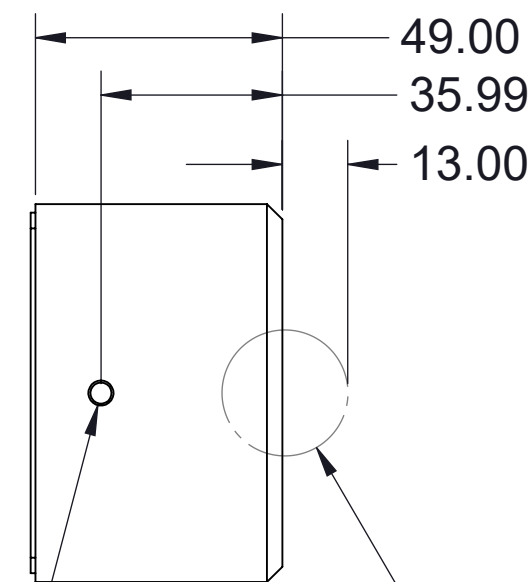
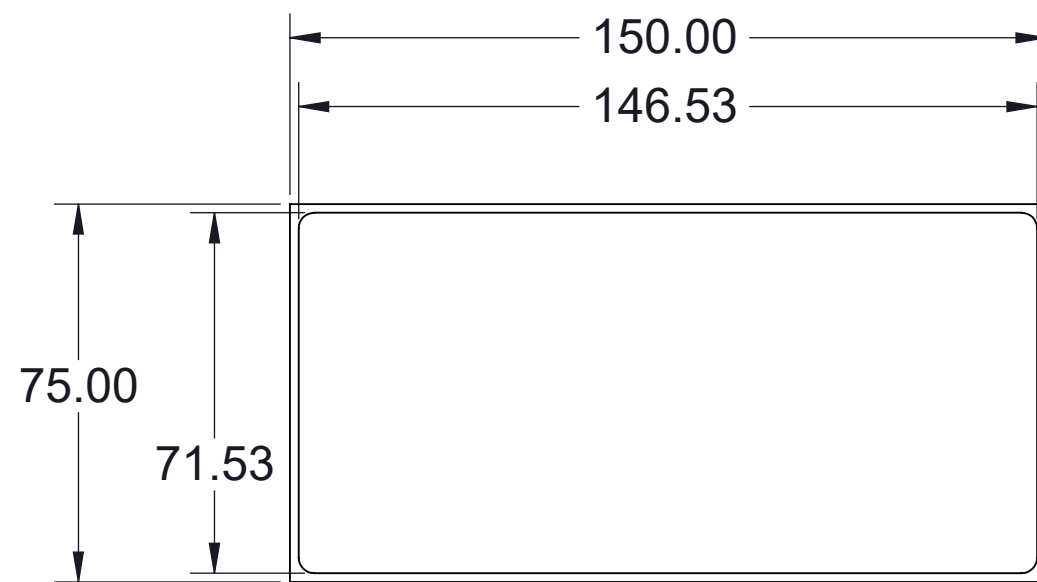
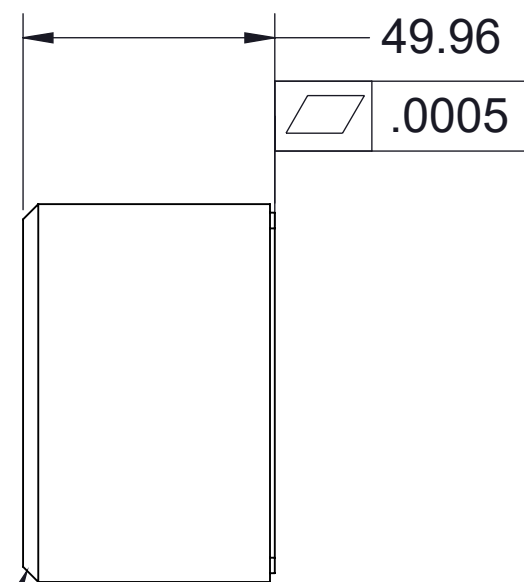


3X M3X0.5 - 6H ∇ 6.35
EQUALLY SPACED ON A
 ϕ 38.1 BOLT CIRCLE



3.0mm X 45° CHAMFER

M5X0.8 - 6H ∇ 10.16
PRESSURE PORT

ϕ 25 TOOLING BALL
NOT INCLUDED

M5X0.8 - 6H ∇ 10.16

PROPRIETARY ITEM:
THIS DRAWING CONTAINS INFORMATION
PROPRIETARY TO NEW WAY MACHINE
COMPONENTS, INC. ANY REPRODUCTION,
DISCLOSURE, OR USE OF THIS DRAWING OR THE
INFORMATION CONTAINED HEREIN
IS EXPRESSLY PROHIBITED EXCEPT AS NEW WAY
MAY OTHERWISE AGREE TO IN WRITING. ALL
RIGHTS RESERVED BY NEW WAY MACHINE
COMPONENTS, INC.

TOLERANCES UNLESS OTHERWISE SPECIFIED ANGLES \pm 1/2° DECIMALS .XX \pm .254 MM DECIMALS .XXX \pm .127 MM SURFACE ROUGHNESS 1.6 ∇ RMS MAX. BREAK ALL SHARP EDGES .127-.508 MM	TITLE: FLAT AIR BEARING, 75mm X 150mm			
	DRAWN: BM	DATE: 8/26/2015		
	CHECKED:	DATE:	HEAT TREAT:	
	SCALE: 1:1.5	SHT: 1 OF 1	EWO. NO.:	REV. A
USED ON:	FINISH: BLUE ANODIZE		DWG. NO. S127501	