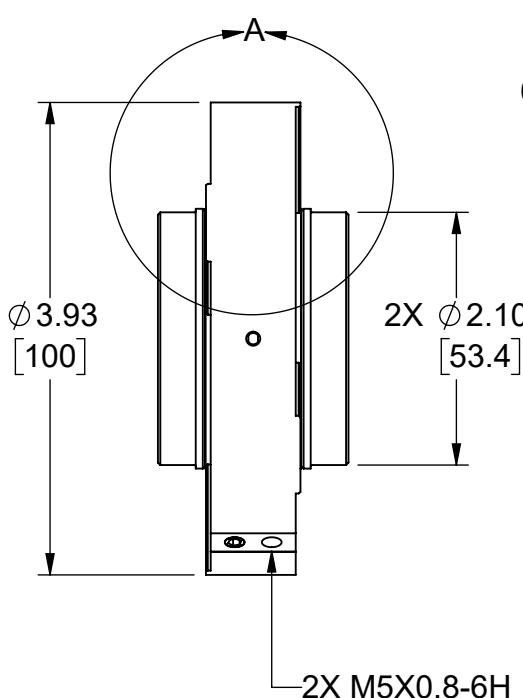
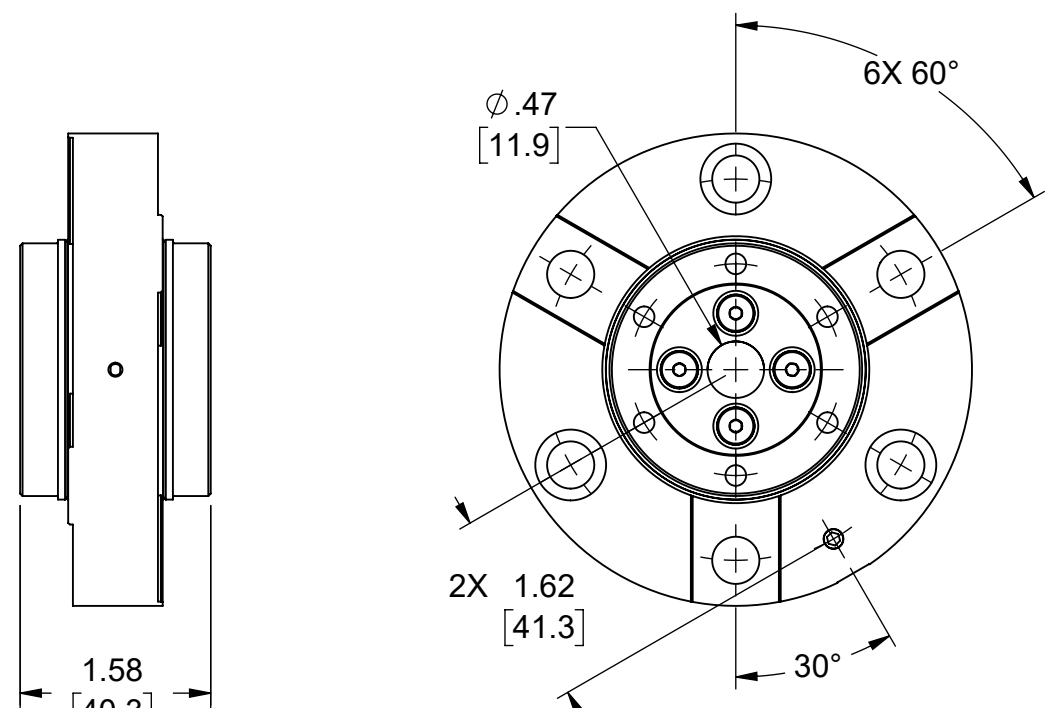
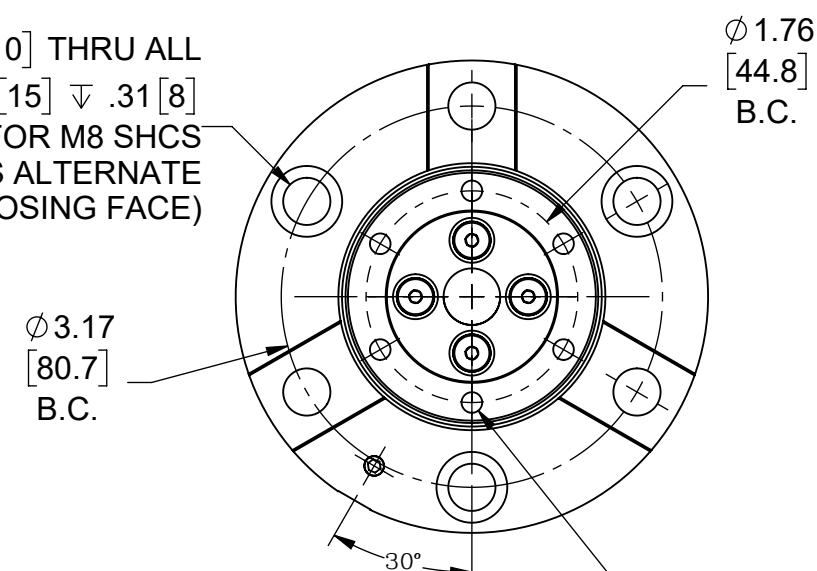


$\sqrt{.001 [0.025]}$
 WHEN SPINDLE IS ROTATING SUPPLIED WITH 60PSI [4.1 BAR] SUPPLY PRESSURE (MOUNTING SURFACE) (BOTH SIDES)

$\sqrt{.001 [0.025]}$
 WHEN SPINDLE IS ROTATING SUPPLIED WITH 60PSI [4.1 BAR] SUPPLY PRESSURE (MOUNTING SURFACE) (BOTH SIDES)



6X ϕ .39 [10] THRU ALL
 \square ϕ .59 [15] ∇ .31 [8]
 FOR M8 SHCS
 (C'BORES ALTERNATE ON OPPOSING FACE)



$\sqrt{.0005 [0.013]} \text{ A}$

$\sqrt{.0005 [0.013]} \text{ A}$

$\sqrt{.0002 [0.005]}$
 6 SURFACES
 (3/SIDE)

NOTES:
 1. ALL DIMENSIONS ARE REFERENCE UNLESS OTHERWISE SPECIFIED.

PROPRIETARY ITEM:
 THIS DRAWING CONTAINS INFORMATION PROPRIETARY TO NEW WAY MACHINE COMPONENTS, INC. ANY REPRODUCTION, DISCLOSURE, OR USE OF THIS DRAWING OR THE INFORMATION CONTAINED HEREIN IS EXPRESSLY PROHIBITED EXCEPT AS NEW WAY MAY OTHERWISE AGREE TO IN WRITING. ALL RIGHTS RESERVED BY NEW WAY MACHINE COMPONENTS, INC.

TOLERANCES UNLESS OTHERWISE SPECIFIED		TITLE: SS-55 SPINDLE		NEWWAY air bearings	
ANGLES: $\pm 1/2^\circ$		DRAWN: EJS	DATE: 11/28/16		
DECIMALS: XX \pm .01		CHECKED:	DATE:	HEAT TREAT: N/A	
FRACTIONS: $\pm 1/64$		SCALE: 5:8	SHT. 1 OF 1	DWG. TYPE	
SURFACE ROUGHNESS: $\sqrt{RMS \text{ MAX}}$		USED ON (NW #): N/A		FINISH: N/A	
BREAK ALL SHARP EDGES: .005-.020				DWG. # SS-55	
				REV. -	