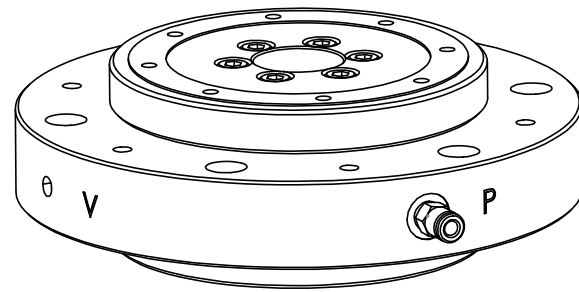


4

3

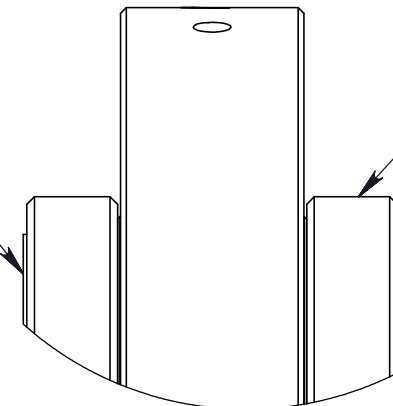
2

1



$\sqrt{\text{.001}} \text{ [}.025\text{]}$
 WHEN SPINDLE IS
 ROTATING SUPPLIED
 WITH 60 PSI [4.1 BAR]
 SUPPLY PRESSURE
 (MOUNTING SURFACE)
 (BOTH SIDES)

$\sqrt{\text{.001}} \text{ [}.025\text{]}$
 WHEN SPINDLE IS
 ROTATING SUPPLIED
 WITH 60 PSI [4.1 BAR]
 SUPPLY PRESSURE
 (BOTH SIDES)



DETAIL A
 SCALE 1 : 1

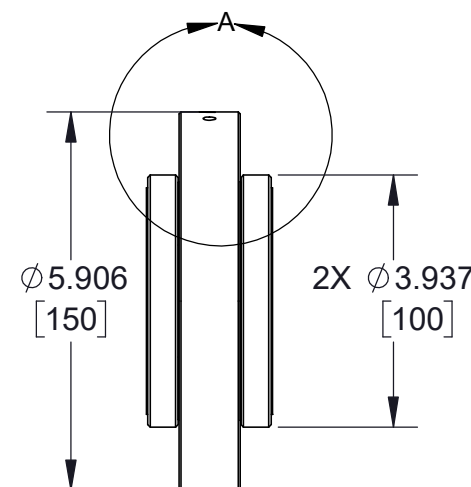
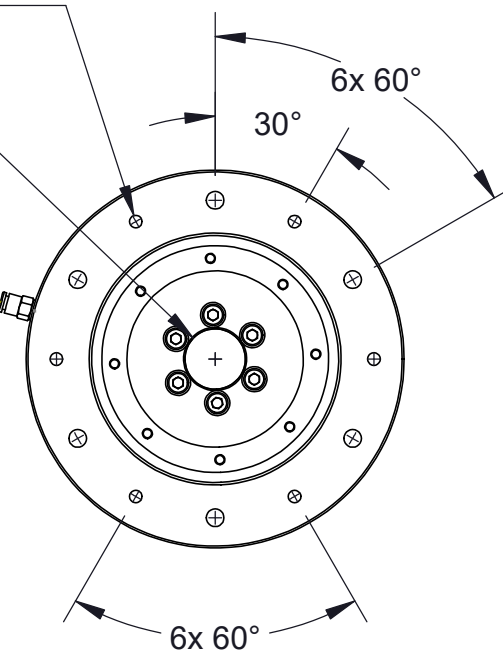
6X ϕ .197 [5.0] THRU ALL
 M6X1.0 - 6H THRU ALL
 EQ. SP.

6X ϕ .276 [7.0] THRU ALL
 ϕ .433 [11.0] ∇ .25 [6.4]
 EQ. SP.

AIR SUPPLY
 M5X0.8 - 6H ∇ .39 [10.0]
 AIR PRESSURE
 SUPPLY PORT

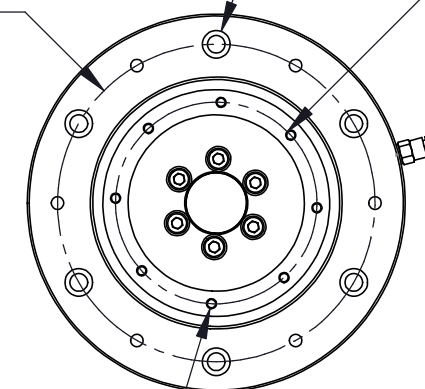
M5 TO 5/32" O.D.
 TUBE ONE TOUCH
 FITTING

ϕ .946 [24]



ϕ 4.961 [126]
 B.C.

ϕ 3.150 [80]
 B.C.



8X ϕ .130 [3.3] ∇ .41 [10.5]
 M4X0.7 - 6H ∇ .30 [7.6]
 EQ. SP. ON BOTH SIDES

$\sqrt{\text{.0005}} \text{ [}.013\text{]} \text{ B}$

1.969 [50]

.955 [24.3]

2X .507 [12.9]

$\sqrt{\text{.0002}} \text{ [}.005\text{]}$

$\sqrt{\text{.0002}} \text{ [}.005\text{]}$

1.969 [50]

2X M5X0.8 - 6H ∇ .22 [5.5]
 VENT PORT
 DO NOT OBSTRUCT

2X .507 [12.9]

NOTES:
 1. ALL DIMENSIONS ARE REFERENCE
 UNLESS OTHERWISE SPECIFIED.

PROPRIETARY ITEM:
 THIS DRAWING CONTAINS
 INFORMATION PROPRIETARY TO NEW
 WAY MACHINE COMPONENTS, INC. ANY
 REPRODUCTION, DISCLOSURE, OR USE
 OF THIS DRAWING OR THE
 INFORMATION CONTAINED HEREIN
 IS EXPRESSLY PROHIBITED EXCEPT AS
 NEW WAY MAY OTHERWISE AGREE TO
 IN WRITING. ALL RIGHTS RESERVED BY
 NEW WAY MACHINE COMPONENTS, INC.

| | | | | | |
|--|-----------------------|---------------|-----------------|------------|--------|
| TOLERANCES UNLESS OTHERWISE SPECIFIED ANGLES: $\pm 1/2^\circ$ DECIMALS: XX \pm .01 XXX \pm .005 FRACTIONS: $\pm 1/64$ SURFACE ROUGHNESS: $\sqrt{\text{RMS MAX}}$ BREAK ALL SHARP EDGES: .005-.020 | TITLE: SS-100 SPINDLE | | | | |
| | DRAWN: N.S. | DATE: 5/12/14 | MATERIAL: N/A | | |
| | CHECKED: | DATE: | HEAT TREAT: N/A | DWG. TYPE: | |
| | SCALE: 1:3 | SHT. 1 OF 1 | FINISH: N/A | DWG. #: | SS-100 |
| | USED ON (NW #): N/A | | | REV. D | |

4

3

2

1