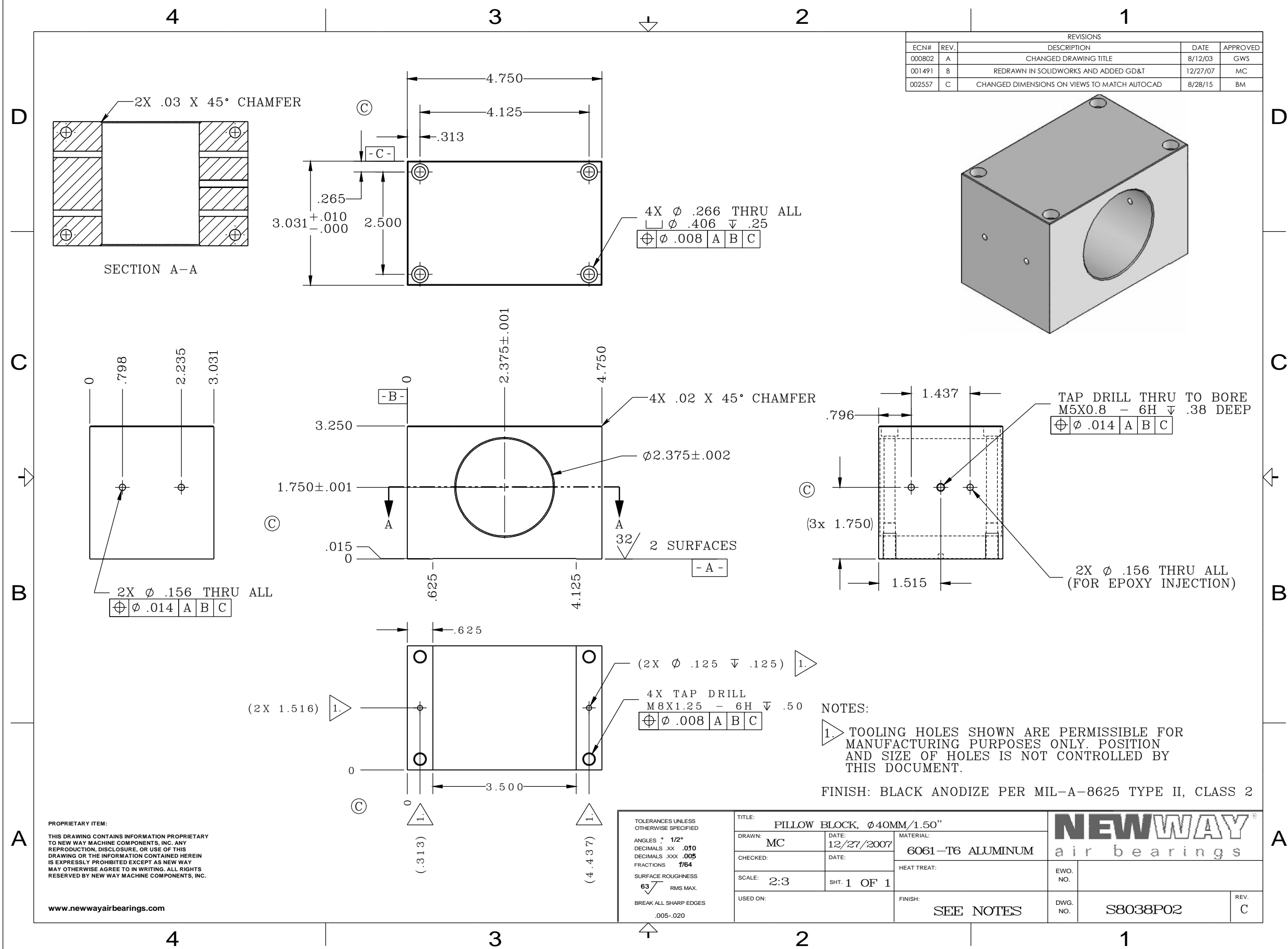
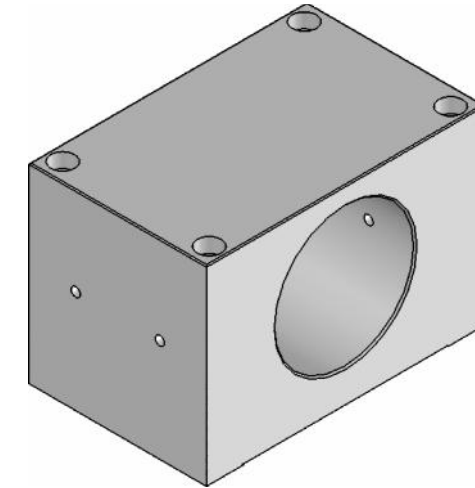


REVISIONS				
ECN#	REV.	DESCRIPTION	DATE	APPROVED
000802	A	CHANGED DRAWING TITLE	8/12/03	GWS
001491	B	REDRAWN IN SOLIDWORKS AND ADDED GD&T	12/27/07	MC
002557	C	CHANGED DIMENSIONS ON VIEWS TO MATCH AUTOCAD	8/28/15	BM



PROPRIETARY ITEM:
 THIS DRAWING CONTAINS INFORMATION PROPRIETARY TO NEW WAY MACHINE COMPONENTS, INC. ANY REPRODUCTION, DISCLOSURE, OR USE OF THIS DRAWING OR THE INFORMATION CONTAINED HEREIN IS EXPRESSLY PROHIBITED EXCEPT AS NEW WAY MAY OTHERWISE AGREE TO IN WRITING. ALL RIGHTS RESERVED BY NEW WAY MACHINE COMPONENTS, INC.

www.newwayairbearings.com

TOLERANCES UNLESS OTHERWISE SPECIFIED		TITLE: PILLOW BLOCK, Ø40MM/1.50"		NEWWAY air bearings	
ANGLES ± 1/2°	DECIMALS .XX .010	DRAWN: MC	DATE: 12/27/2007		
DECIMALS .XXX .005	FRACTIONS 1/64	CHECKED:	DATE:	HEAT TREAT:	EWO. NO.
SURFACE ROUGHNESS 63 RMS MAX.	BREAK ALL SHARP EDGES .005-.020	SCALE: 2:3	SHT. 1 OF 1	FINISH: SEE NOTES	DWG. NO. S8038P02
		USED ON:			REV. C

NOTES:
 1. TOOLING HOLES SHOWN ARE PERMISSIBLE FOR MANUFACTURING PURPOSES ONLY. POSITION AND SIZE OF HOLES IS NOT CONTROLLED BY THIS DOCUMENT.

FINISH: BLACK ANODIZE PER MIL-A-8625 TYPE II, CLASS 2