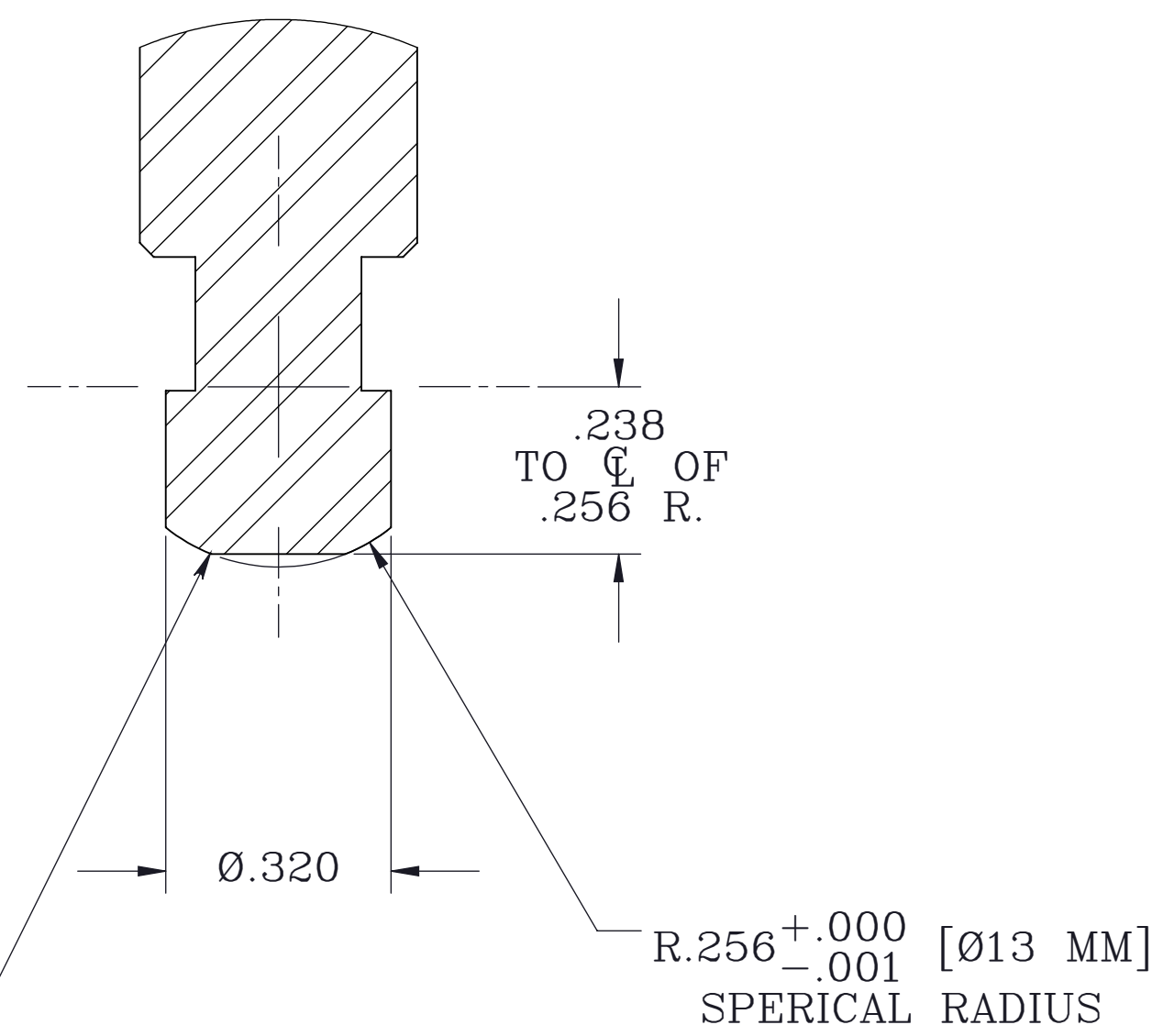
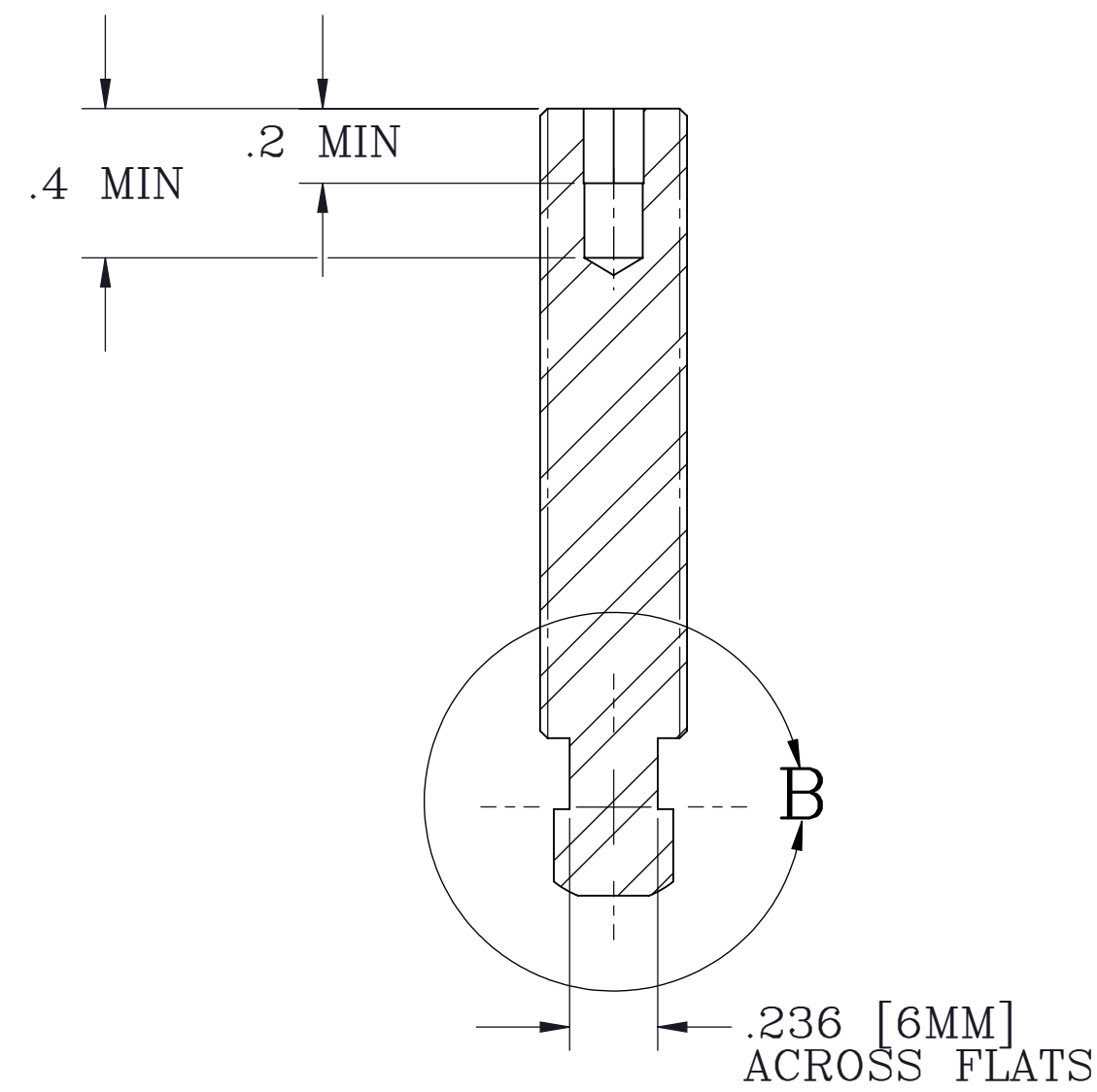
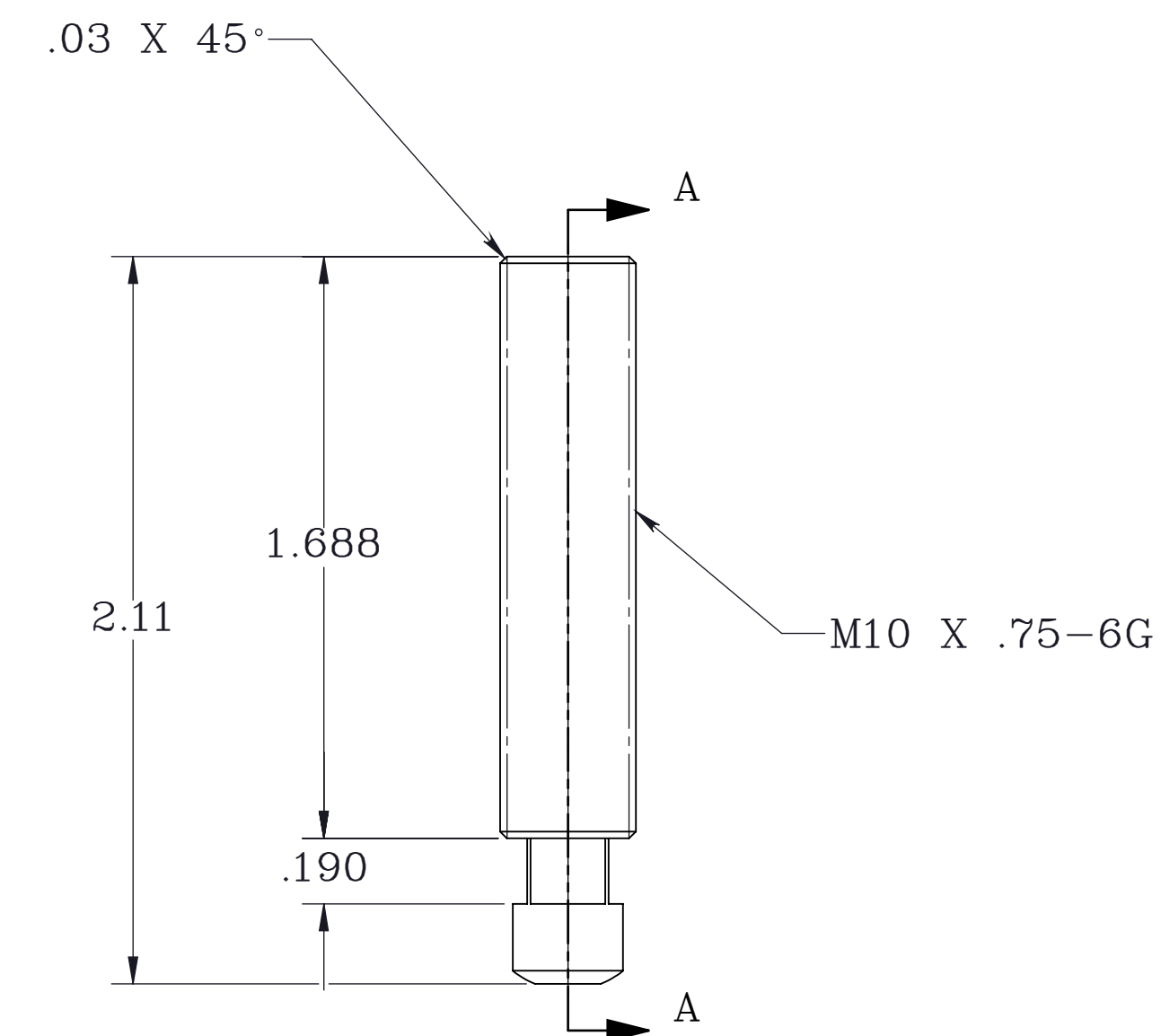
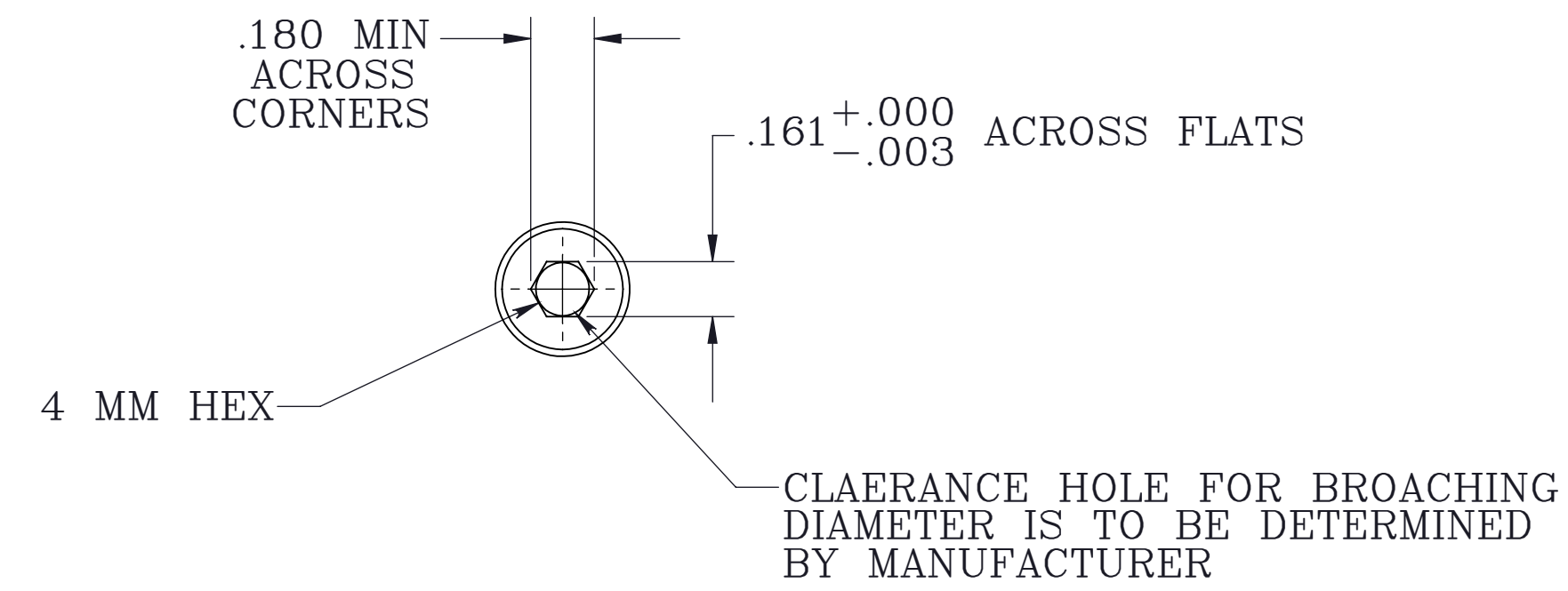
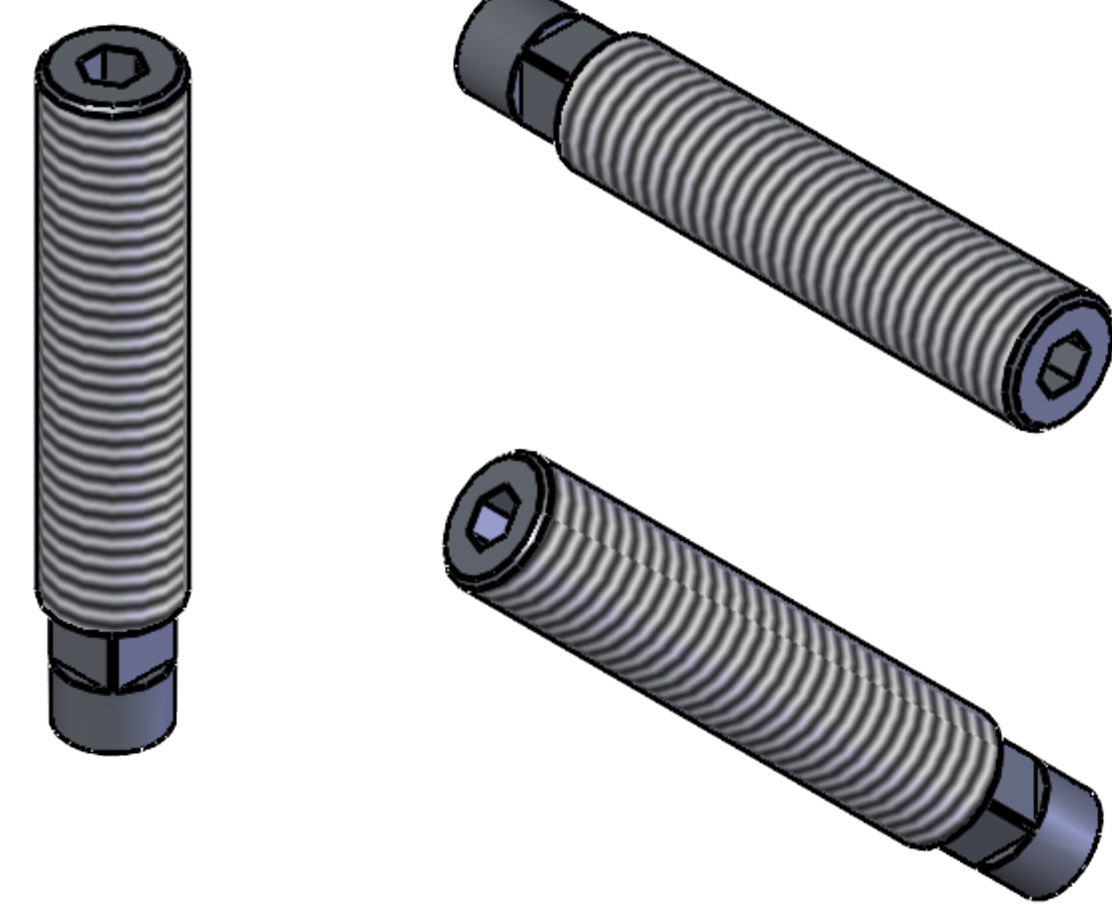


REVISIONS				
ECN #	REV.	DESCRIPTION	DATE	APPROVED
000825	A	UPDATED BROACH DIMENSIONS	11/6/03	GWS
001108	B		11/22/05	KCS



DETAIL B
SCALE 4 : 1

SECTION A-A

NOTES:

1. MATERIAL: 416 STAINLESS STEEL, HEAT TREATED AND COLD FINISHED TO ROCKWELL 'C' 25-32.

PROPRIETARY ITEM:
THIS DRAWING CONTAINS INFORMATION PROPRIETARY TO NEW WAY MACHINE COMPONENTS, INC. ANY REPRODUCTION, DISCLOSURE, OR USE OF THIS DRAWING OR THE INFORMATION CONTAINED HEREIN IS EXPRESSLY PROHIBITED EXCEPT AS NEW WAY MAY OTHERWISE AGREE TO IN WRITING. ALL RIGHTS RESERVED BY NEW WAY MACHINE COMPONENTS, INC.

TOLERANCES UNLESS OTHERWISE SPECIFIED ANGLES: 1/2° DECIMALS: .010 DECIMALS: .005 FRACTIONS: 1/64 SURFACE ROUGHNESS: 63 RMS MAX. BREAK ALL SHARP EDGES .005-.020	TITLE: Ø 13 MM BALL MOUNT, M10 X .75 THD.			
	DRAWN: KCS	DATE: 12/1/2022		
	CHECKED:	DATE:	HEAT TREAT:	EW. NO.:
	SCALE: 2:1	SHT. 1 OF 1	FINISH:	DWG. NO. S8013B11
USED ON:			REV. B	