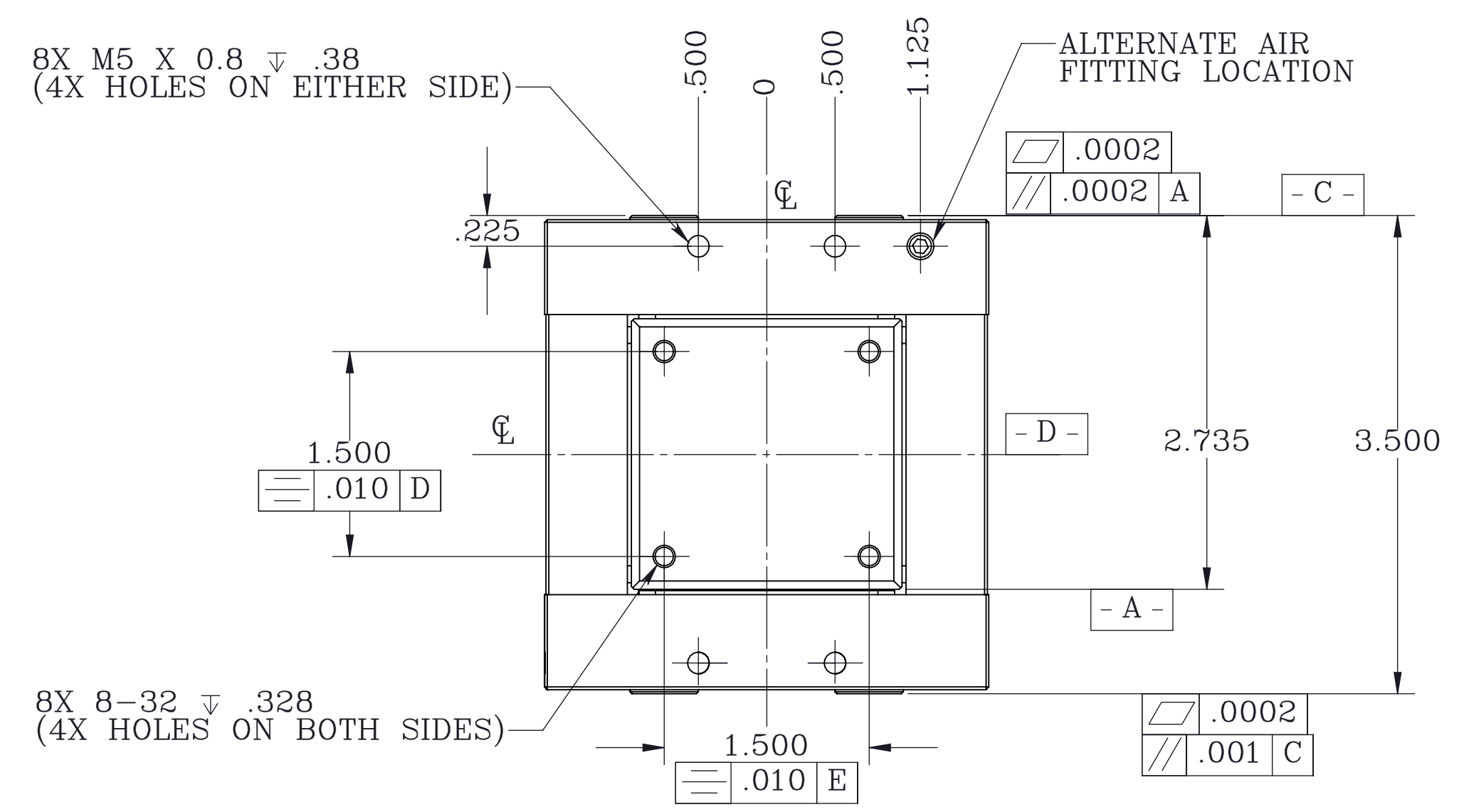
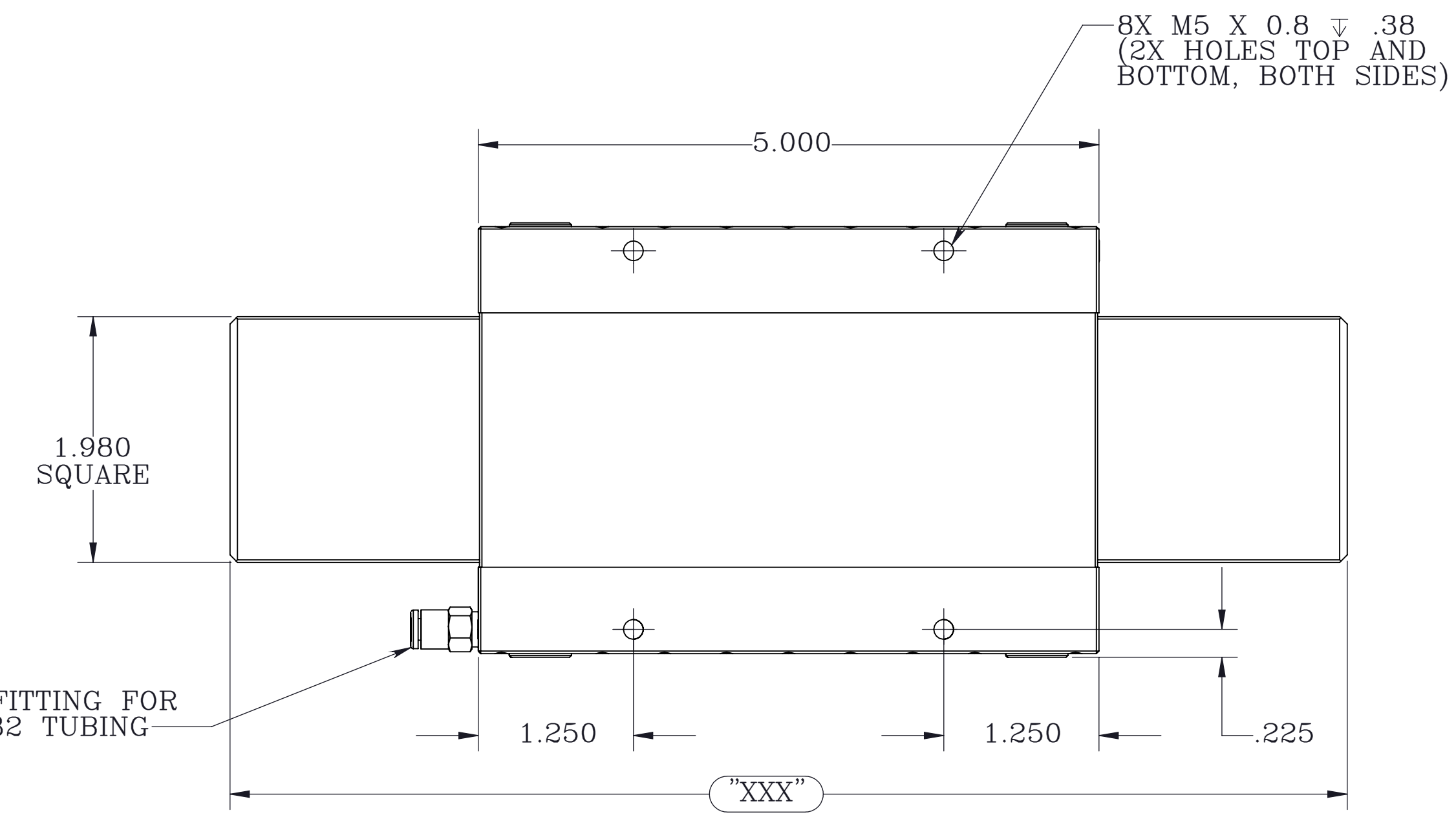
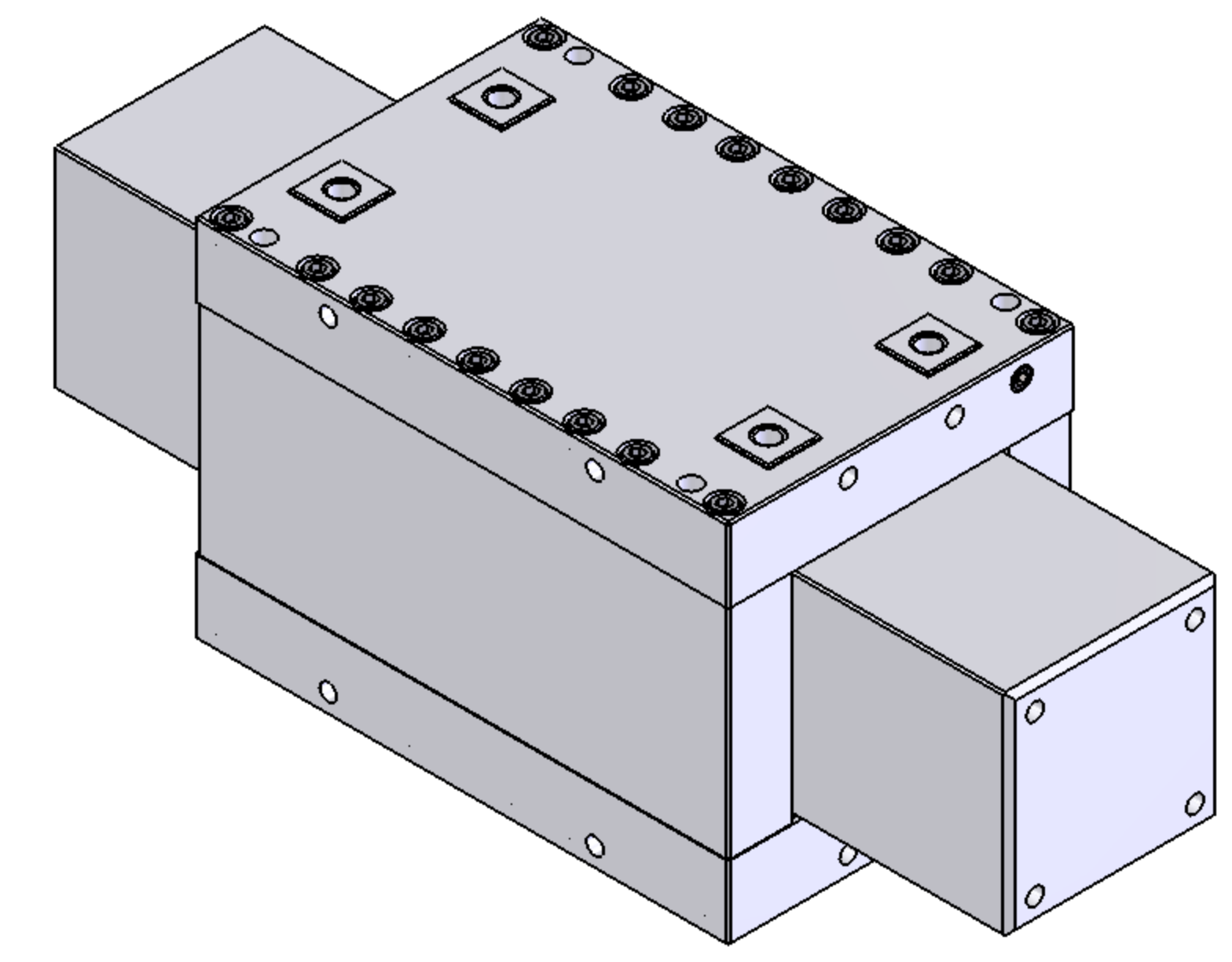
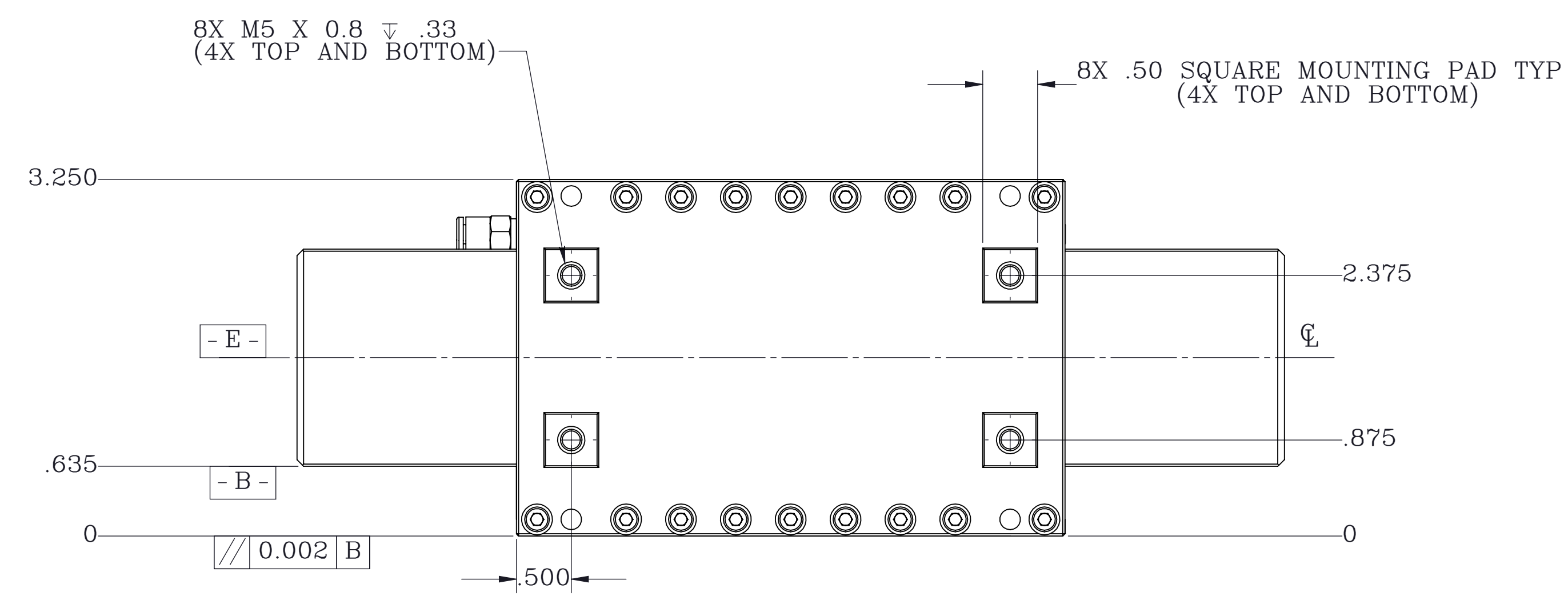



"OAL" GUIDE BAR		STAGE TRAVEL	
inches	mm "XXX"	inches	mm
8	229	4	102
16	432	12	305



- NOTES:
- MATERIAL AND FINISH:
HOUSINGS AND GUIDE BAR: BLACK ANODIZED ALUMINUM
BEARINGS: POROUS CARBON
 - "XXX" IN MILLIMETERS DENOTES THE LAST 3 DIGITS OF THE ASSEMBLY PART NUMBER AS LISTED IN THE CHART ABOVE.

PROPRIETARY ITEM:
THIS DRAWING CONTAINS INFORMATION PROPRIETARY TO NEW WAY MACHINE COMPONENTS, INC. ANY REPRODUCTION, DISCLOSURE, OR USE OF THIS DRAWING OR THE INFORMATION CONTAINED HEREIN IS EXPRESSLY PROHIBITED EXCEPT AS NEW WAY MAY OTHERWISE AGREE TO IN WRITING. ALL RIGHTS RESERVED BY NEW WAY MACHINE COMPONENTS, INC.

TOLERANCES UNLESS OTHERWISE SPECIFIED ANGLES: $\pm 1/2^\circ$ DECIMALS: XX .010 DECIMALS: XXX .005 FRACTIONS: 1/64 SURFACE ROUGHNESS: 63 RMS MAX. BREAK ALL SHARP EDGES .005-.020	TITLE: 2 X 2 SLIDE ASSEMBLY		 air bearings	
	DRAWN: CSS	DATE: 4/14/2014		MATERIAL: SEE NOTES
	CHECKED:	DATE:	HEAT TREAT:	EW. NO.:
	SCALE: 1:1	SHT. 1 OF 1	FINISH: SEE NOTES	DWG. NO. S40-03125-050XXX-C