

4

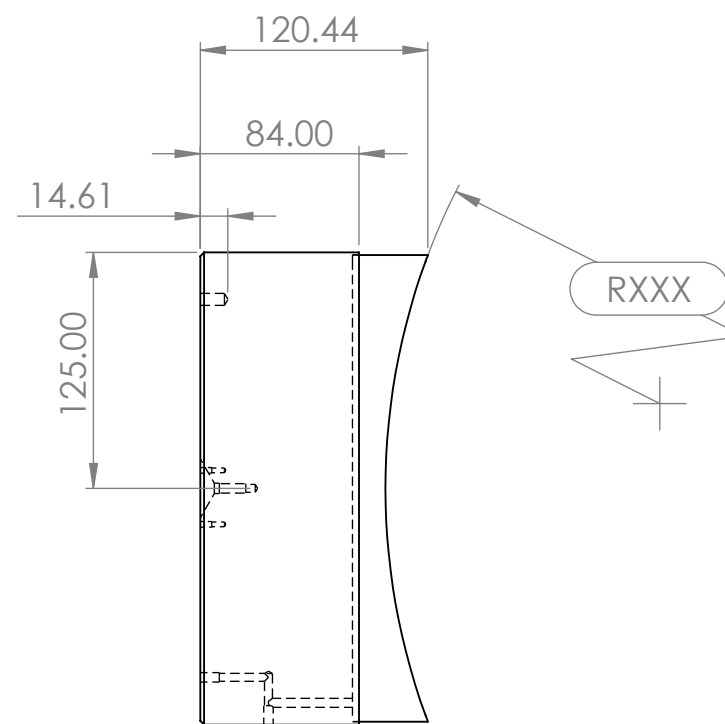
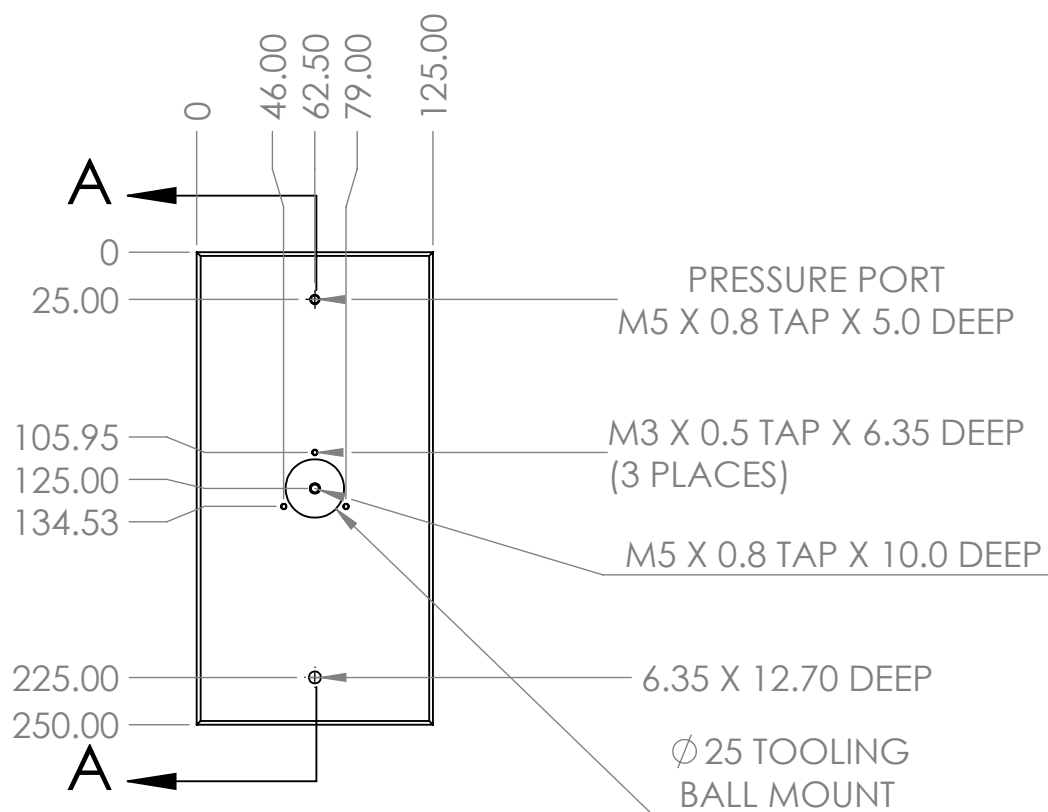
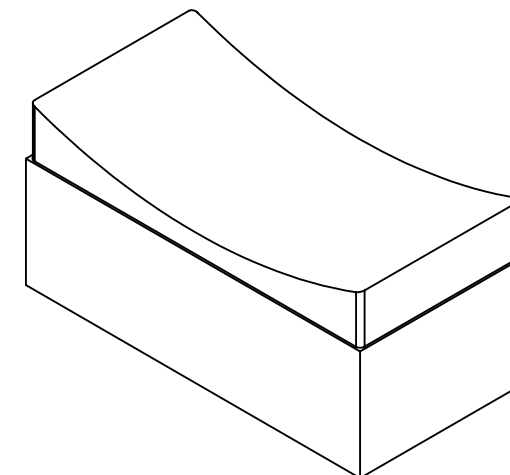
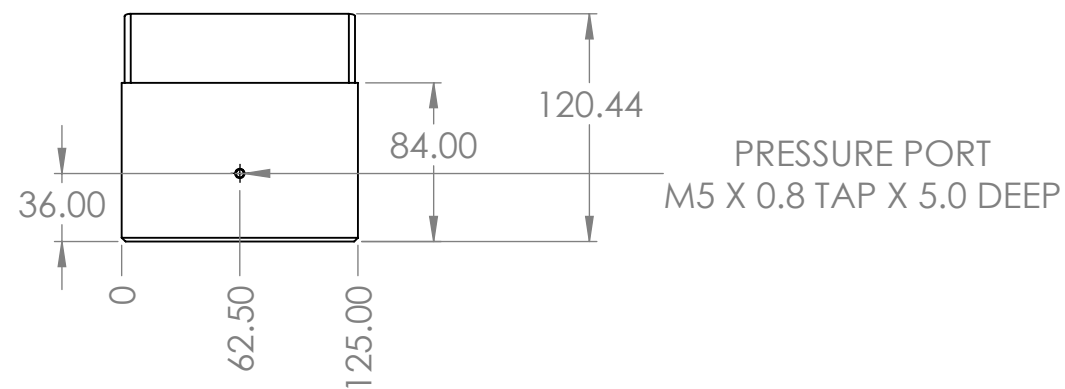
3

2

1

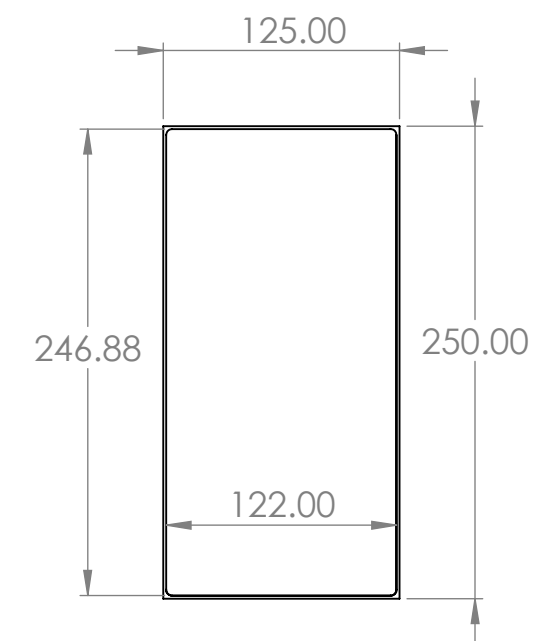
B

B



SECTION A-A

SCALE 1 : 4



NOTES:

- ALL DIMENSIONS ARE REFERENCE UNLESS OTHERWISE NOTED
- ALL DIMENSIONS ARE IN MILLIMETERS (MM)
- TOOLING BALL IS REFERENCE ONLY (NOT INCLUDED)
- RADIUS XXX MIN:250MM MAX:1250MM

PROPRIETARY ITEM:
THIS DRAWING CONTAINS
INFORMATION PROPRIETARY TO NEW
WAY MACHINE COMPONENTS, INC. ANY
REPRODUCTION, DISCLOSURE, OR USE
OF THIS DRAWING OR THE
INFORMATION CONTAINED HEREIN
IS EXPRESSLY PROHIBITED EXCEPT AS
NEW WAY MAY OTHERWISE AGREE TO
IN WRITING. ALL RIGHTS RESERVED BY
NEW WAY MACHINE COMPONENTS, INC.

TOLERANCES UNLESS OTHERWISE SPECIFIED ANGLES: ± 1/2° DECIMALS: XX ± .01 XXX ± .005 FRACTIONS: ± 1/64 SURFACE ROUGHNESS: RMS MAX. BREAK ALL SHARP EDGES: .005-.020	TITLE: 125MM X 250MM RADIAL BEARING		 air bearings	
	DRAWN: EBM3	DATE: 4/4/23		
	CHECKED:	DATE:	HEAT TREAT:	
	SCALE: 1:4	SHT. 1 OF 1	FINISH: SEE NOTES	
USED ON (NW #):		DWG. # S32125LXXX	REV. -	

4

3

2

1

A

A