

4

3

2

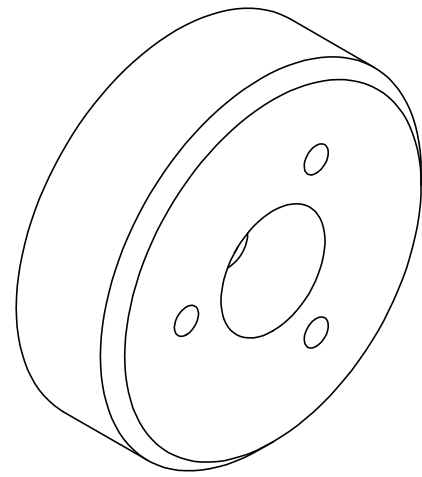
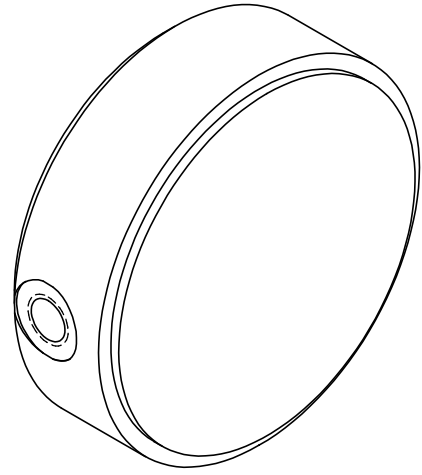
1

B

B

A

A



 .00002 [0.0005]

$.512 \pm .015$
[13.00 ± .38]

$\phi 1.6$
[40]

$\phi .51$
[13]
TOOLING BALL
NOT INCLUDED

$.210$
[5.33]

$\phi 1.45$
[36.83]

$\phi .85$
[21.59]
B.C.

$\phi .31$ [8]
 $\phi .165$ [4.20] $\nabla .500$ [12.70]
M5X0.8 - 6H $\nabla .300$ [7.62]
PRESSURE PORT

$.060 \times 45^\circ$
[1.52]

R.26
[6.48]


3X $\phi .098$ [2.50] $\nabla .230$ [5.84]
M3X0.5 - 6H $\nabla .130$ [3.30]
EQ. SP.

$.276^{+.000}$
 $-.005$
[7.01 .00]
-.12]

NOTES:

- ALL DIMENSIONS ARE REFERENCE UNLESS OTHERWISE SPECIFIED.

PROPRIETARY ITEM:
THIS DRAWING CONTAINS
INFORMATION PROPRIETARY TO NEW
WAY MACHINE COMPONENTS, INC. ANY
REPRODUCTION, DISCLOSURE, OR USE
OF THIS DRAWING OR THE
INFORMATION CONTAINED HEREIN
IS EXPRESSLY PROHIBITED EXCEPT AS
NEW WAY MAY OTHERWISE AGREE TO
IN WRITING. ALL RIGHTS RESERVED BY
NEW WAY MACHINE COMPONENTS, INC.

| | | | | |
|----------------------------------------------------------------------------------------------------------------------------------------------------------------------------------------------------------------------------------|---------------------------------------|--------------------|---------------------------------------------------------------------------------------|--------------|
| TOLERANCES UNLESS OTHERWISE SPECIFIED ANGLES: $\pm 1/2^\circ$ DECIMALS: XX $\pm .01$ XXX $\pm .005$ FRACTIONS: $\pm 1/64$ SURFACE ROUGHNESS: $\sqrt{\text{RMS MAX}}$ BREAK ALL SHARP EDGES: .005-.020 | TITLE: 40mm FLAT ROUND AIR BEARING | |  | |
| | DRAWN: MC | DATE: 7/1/2019 | | |
| | CHECKED: | DATE: | HEAT TREAT: N/A | |
| | SCALE: 2:1 | SHT. 1 OF 1 | FINISH: N/A | |
| USED ON (NW #): N/A | | DWG. #: S104001 | | REV. #: D |

4

3

2

1