

4

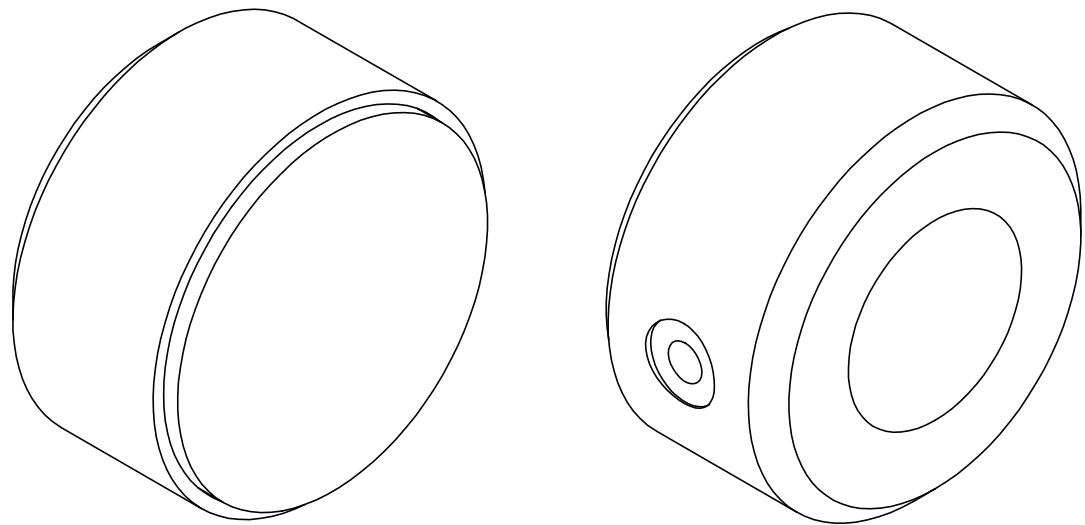
3

2

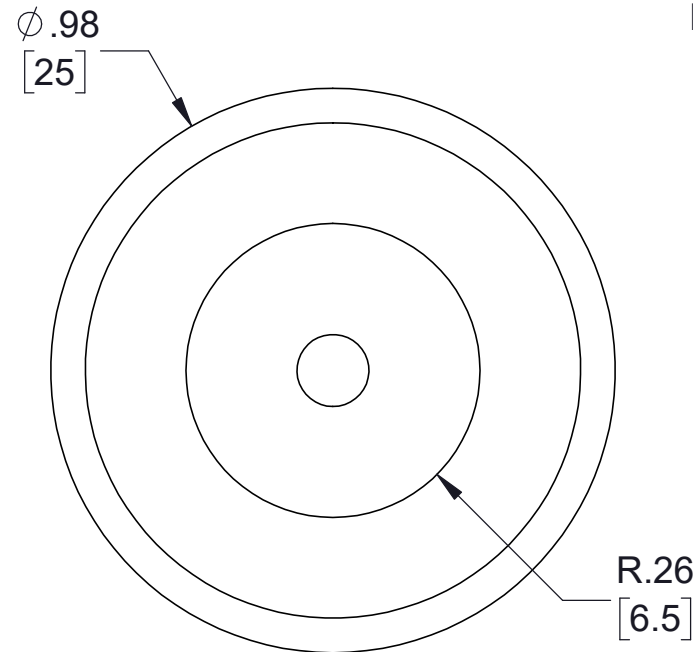
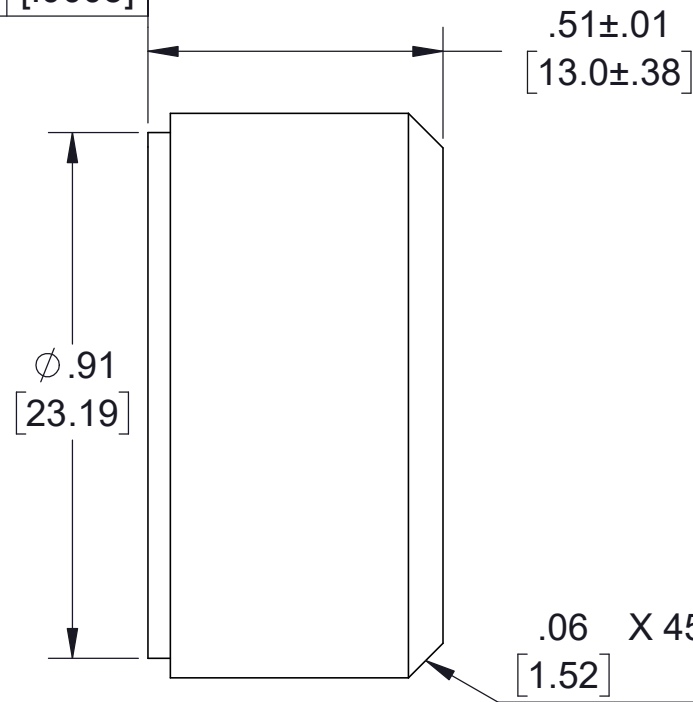
1

B

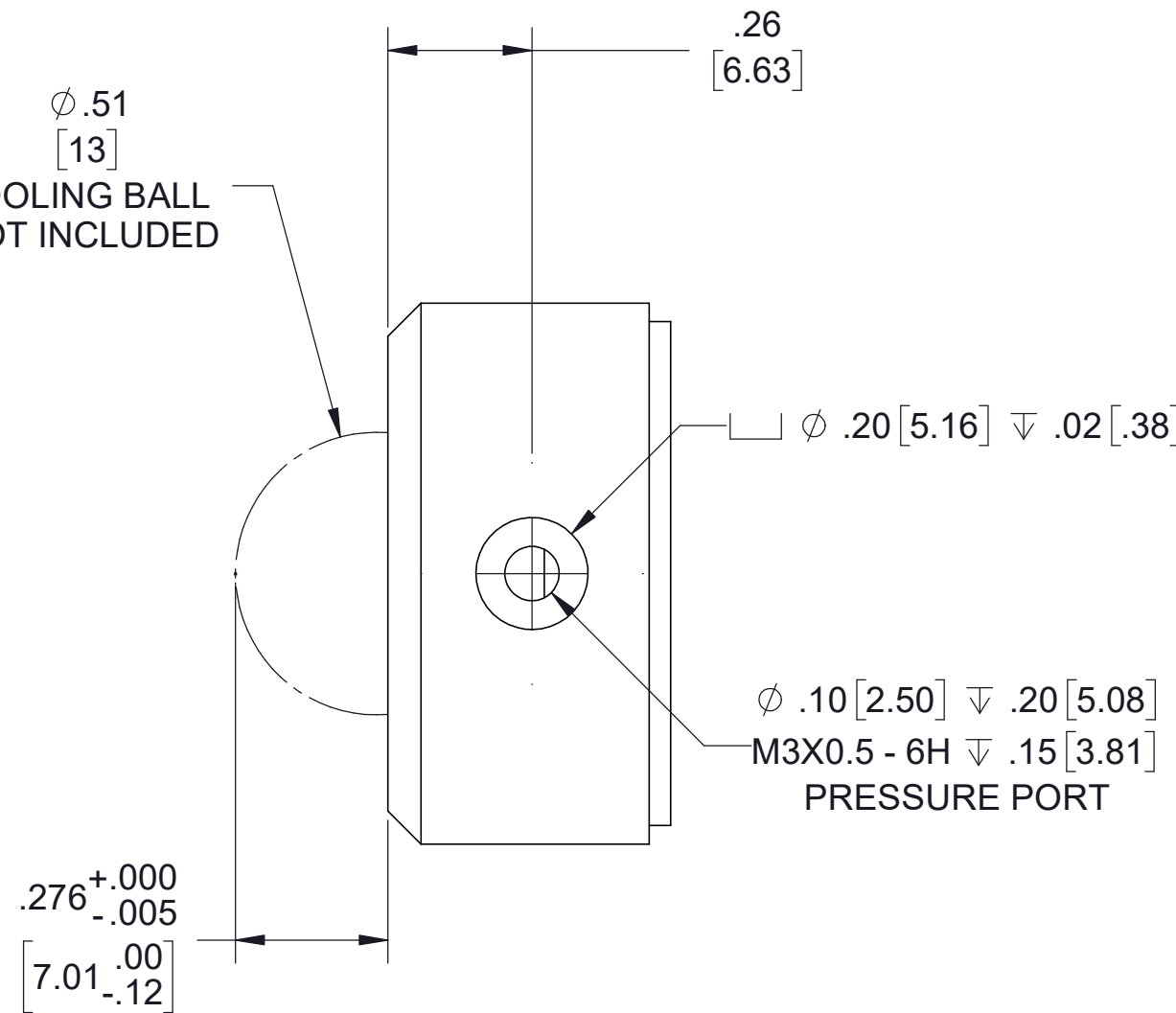
B



	.00002	[.0005]
--	--------	---------



Ø.51 [13]  
TOOLING BALL  
NOT INCLUDED



A

A

NOTES:

- ALL DIMENSIONS ARE REFERENCE UNLESS OTHERWISE SPECIFIED.

PROPRIETARY ITEM:  
THIS DRAWING CONTAINS INFORMATION PROPRIETARY TO NEW WAY MACHINE COMPONENTS, INC. ANY REPRODUCTION, DISCLOSURE, OR USE OF THIS DRAWING OR THE INFORMATION CONTAINED HEREIN IS EXPRESSLY PROHIBITED EXCEPT AS NEW WAY MAY OTHERWISE AGREE TO IN WRITING. ALL RIGHTS RESERVED BY NEW WAY MACHINE COMPONENTS, INC.

TOLERANCES UNLESS OTHERWISE SPECIFIED ANGLES: ± 1/2° DECIMALS: XX ± .01 XXX ± .005 FRACTIONS: ± 1/64 SURFACE ROUGHNESS: RMS MAX. BREAK ALL SHARP EDGES: .005-.020	TITLE: 25mm FLAT ROUND AIR BEARING			
	DRAWN: BM	DATE: 7/2/2019		
	CHECKED:	DATE:	HEAT TREAT: N/A	
	SCALE: 3:1	SHT. 1 OF 1	FINISH: N/A	
USED ON (NW #): N/A		FINISH: N/A		DWG. # S102501
				REV. F

4

3

2

1