

4

3

2

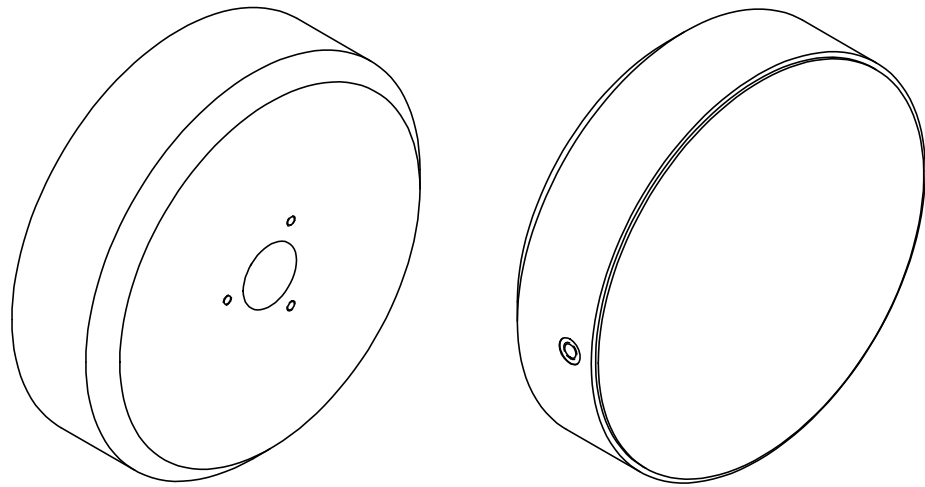
1

B

B

A

A

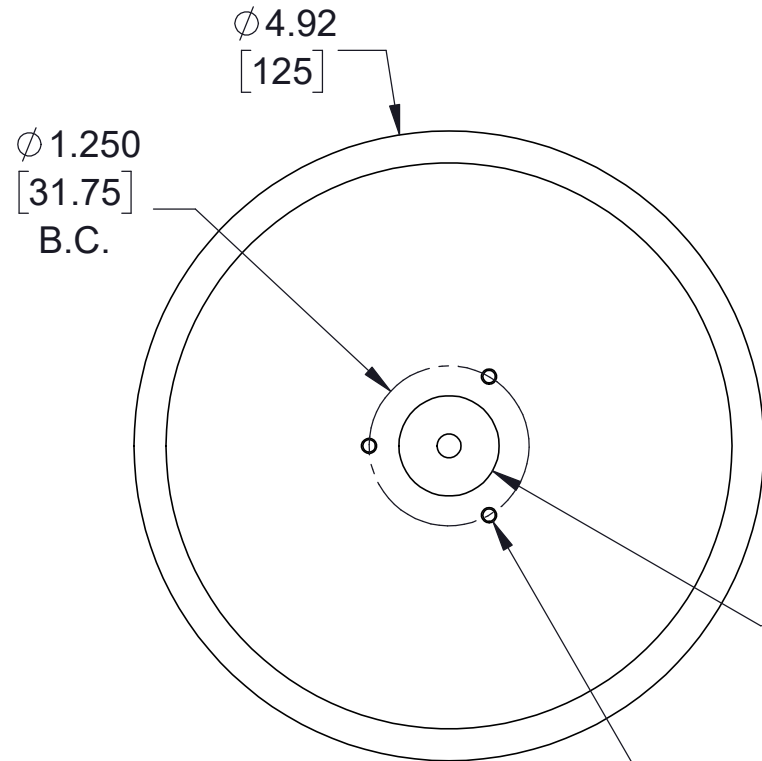


	.00002	[.0005]
--	--------	---------

1.379±.015
[35.03±.38]

∅ 4.80
[121.82]

.250 X 45°
[6.35]



3X ∅ .10 [2.50] ∇ .38 [9.65]
M3X0.5 - 6H ∇ .24 [5.99]
EQ. SP.

∅ .79
[20]
TOOLING BALL
NOT INCLUDED

R.39
[9.96]

.434^{+.000}
-.005
[11.02^{.00}
-.12]

1.021
[25.93]

∅ .06 [1.40] ∇ .25 [6.35]
∅ .31 [7.87] ∇ .01 [.25]

∅ .17 [4.20] ∇ 2.25 [57.15]
M5X0.8 - 6H ∇ .30 [7.62]
PRESSURE PORT

NOTES:

- ALL DIMENSIONS ARE REFERENCE UNLESS OTHERWISE SPECIFIED.

PROPRIETARY ITEM:
THIS DRAWING CONTAINS
INFORMATION PROPRIETARY TO NEW
WAY MACHINE COMPONENTS, INC. ANY
REPRODUCTION, DISCLOSURE, OR USE
OF THIS DRAWING OR THE
INFORMATION CONTAINED HEREIN
IS EXPRESSLY PROHIBITED EXCEPT AS
NEW WAY MAY OTHERWISE AGREE TO
IN WRITING. ALL RIGHTS RESERVED BY
NEW WAY MACHINE COMPONENTS, INC.

TOLERANCES UNLESS OTHERWISE SPECIFIED ANGLES: ± 1/2° DECIMALS: XX ± .01 XXX ± .005 FRACTIONS: ± 1/64 SURFACE ROUGHNESS: RMS MAX. BREAK ALL SHARP EDGES: .005-.020	TITLE: 125mm FLAT ROUND AIR BEARING		 air bearings	
	DRAWN: BM	DATE: 7/1/2019		
	CHECKED:	DATE:	HEAT TREAT: N/A	
	SCALE: 1:1	SHT. 1 OF 1	FINISH: N/A	
	USED ON (NW #): N/A		DWG. #: S1012501	

4

3

2

1