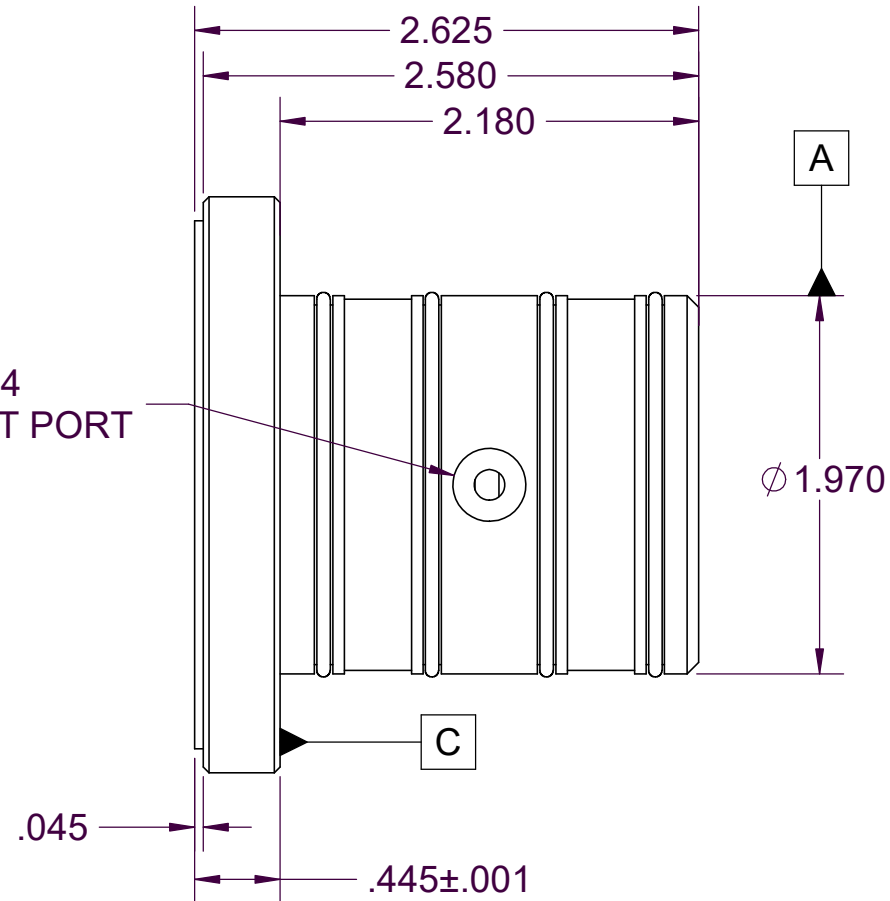


$\perp \phi .380 \nabla .004$
 M3X.05 - 6H AIR INPUT PORT



	.00002	
	.0002	B
	.004	C

NOTES:

1. ALL DIMENSIONS ARE IN INCHES
2. ALL DIMENSIONS ARE REFERENCE UNLESS OTHERWISE SPECIFIED

PROPRIETARY ITEM:
 THIS DRAWING CONTAINS INFORMATION PROPRIETARY TO NEW WAY MACHINE COMPONENTS, INC. ANY REPRODUCTION, DISCLOSURE, OR USE OF THIS DRAWING OR THE INFORMATION CONTAINED HEREIN IS EXPRESSLY PROHIBITED EXCEPT AS NEW WAY MAY OTHERWISE AGREE TO IN WRITING. ALL RIGHTS RESERVED BY NEW WAY MACHINE COMPONENTS, INC.

TOLERANCES UNLESS OTHERWISE SPECIFIED ANGLES: $\pm 1/2^\circ$ DECIMALS: XX $\pm .01$ XXX $\pm .005$ FRACTIONS: $\pm 1/64$ SURFACE ROUGHNESS: RMS MAX. BREAK ALL SHARP EDGES: .005-.020	TITLE: THRUST AIR BUSHING - 1.25" ID			
	DRAWN: RSH	DATE: 07/22/19		
	CHECKED:	DATE:	HEAT TREAT: N/A	
	SCALE: 1:1	SHT. 1 OF 1	FINISH: N/A	
USED ON (NW #): N/A		DWG. # C303202	REV.	