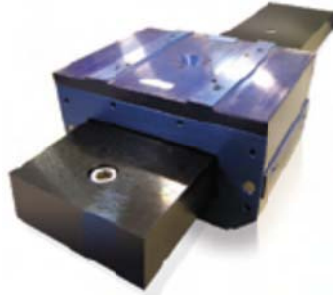


# AirWay™ Air Bearing Linear Motion Guide System

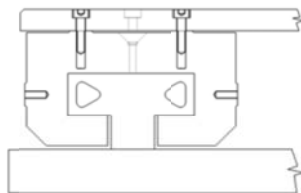


## Performance and Specifications

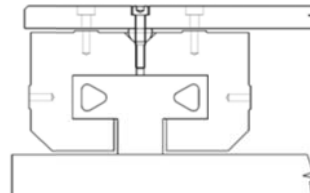
	Guide	Truck
<b>Material</b>	Black Anodized Aluminum	Blue Anodized Aluminum
<b>Mass</b>	5.5 KG. Per Meter of Length	1.3 KG.

Input Pressure			Input Flow	Load Capacity	
(KPA)	(BAR)	(PSI)	(SLPM)	Vertical (N)	Horizontal (N)
300	3	43.5	6.6	355	236
400	4	58.0	10.0	472	315
500	5	72.5	13.3	590	394
600	6	87.0	17.0	709	473

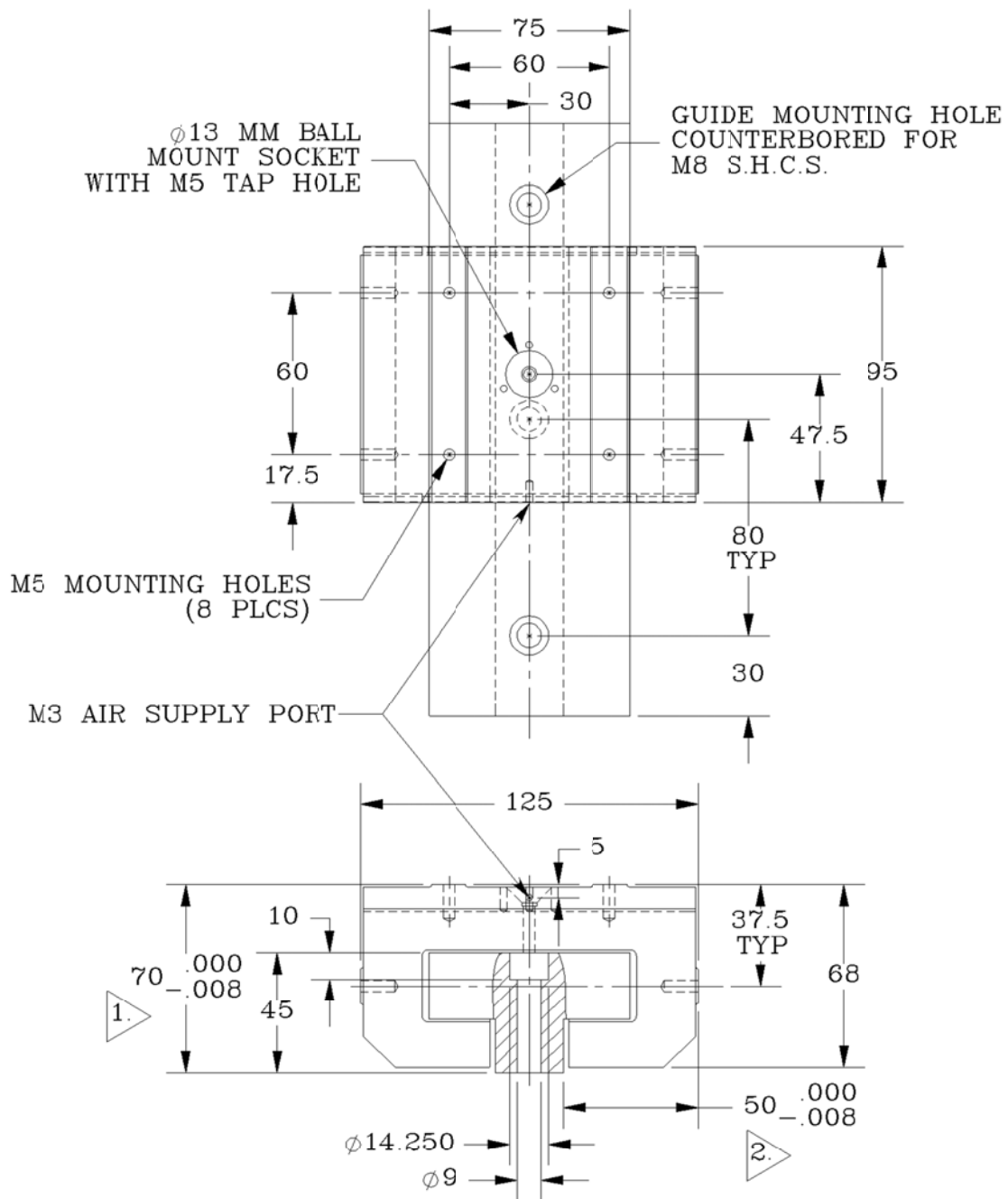
INPUT PRESSURE			INPUT FLOW (SLPM)	MAXIMUM MOMENT FORCE		
(KPA)	(BAR)	(PSI)		PITCH (NM)	ROLL (NM)	YAW (NM)
400	4	58.0	10.0	2.8	2.8	3.9



Mounting Option A



Mounting Option B



RUNNING PARALLELISM	
1.	3 MICRONS PER METER OF RAIL LENGTH
2.	3 MICRONS PER METER OF RAIL LENGTH

**NEWWAY**<sup>®</sup>  
air bearings